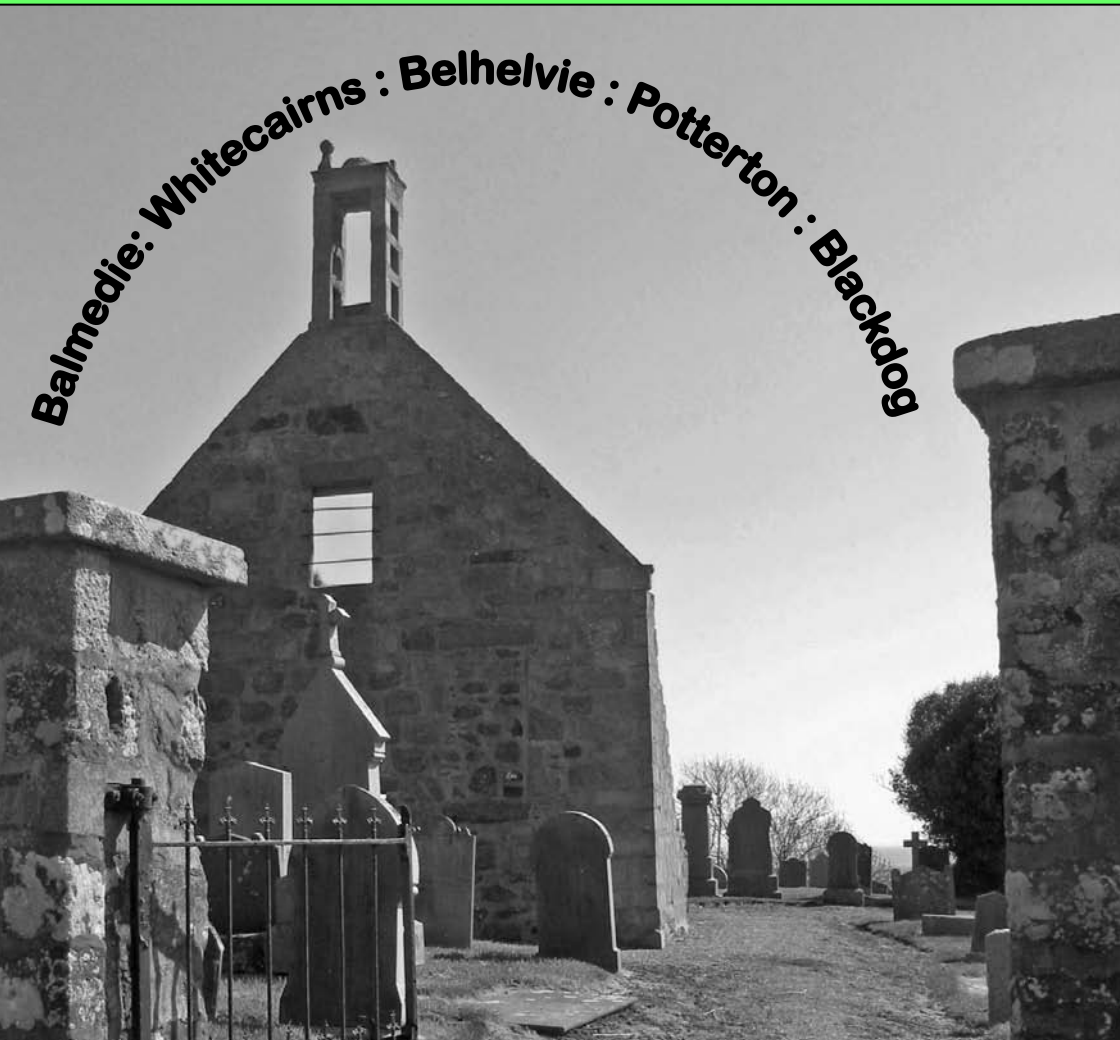


# BELHELVE BANTER



EDITION 3.

JUNE 2010

# Belhelvie Banter

Adverts and articles should be sent to

**[belhelviebanter@live.co.uk](mailto:belhelviebanter@live.co.uk)**

Please include name, address & telephone number in case details need to be clarified.

## **Advertising Prices**

Full page      £55.00

Half page      £30.00

Quarter page   £16.00

## **Articles**

are in font - Garamond 12

**We cannot accept anonymous text, but names can be withheld if necessary.** Advertisers please help us by ensuring that adverts are submitted in Portrait format ☐ for whole-page and quarter-page adverts but in Landscape format ☐ for half-page ones. If in doubt, please contact us.

## **Distribution**

We would be grateful for any help with the distribution of this Parish newsletter. We cover 1800 homes and all deliveries are by far too few volunteers. We are extremely grateful to those few and would appreciate if you could join them.

We would love to hear from you, if you would be willing to deliver to your nearest neighbours.

**Please contact the above email address**

Copy date for next issue is:

**16 August 2010**

Front Cover Photo by:  
Alan Smith



# EDITORIAL

It would be nice to believe that today's sunshine, flooding the room as I write this short editorial, heralds the long-awaited late Spring; certainly Spring will be short this year as we now anticipate Summer, hopefully just around the corner!

Our parish is looking resplendent with its fields and gardens transformed to a variety of fresh greens interspersed with colourful flowers and shrubs, – all this persuades us that the dark grey days of a particularly long winter must finally be behind us. Now our thoughts turn more to things such as gardening, barbeques, holidays and, oh yes, cutting the grass, again and again! The mention of holidays reminds me why I am having to write this short editorial – because our editor is currently languishing somewhere on the west coast of Canada, indeed the postcard I received this morning tells me they are “now in BC and sitting looking out over lush hay meadows”. It must be just like home!

In this issue, as in previous ones, it seems to be the younger residents of our parish who are active, if one is to judge from the various reports submitted. So come on, some of the grown-ups, let's hear what your clubs and organisations get up to and have been doing; as well as being of interest to our readers, it may well increase your memberships.

The draft of the new Local Development Plan (LDP) is due to be issued shortly and although this is a consultative document, it also gives us some indication of the Council's thinking in terms of future developments. For further details, log on: [www.aberdeenshire.gov.uk/planning/ldp/index.asp](http://www.aberdeenshire.gov.uk/planning/ldp/index.asp)

We hope you enjoy reading and find something useful in this Summer edition of “Banter”. Remember, the Digital Switchover will have taken place before the Autumn edition is circulated, so please refer to page 45 or the back cover for information if you haven't yet done anything about this.

*Alan Smith*, pp Audrey H. Jeffries, *Editor*

**P.S. we are always looking for more distributors to help get Belhelvie Banter to all households in the parish.**



Plumbing Heating &  
Gas Services Ltd

## **A full range of plumbing heating and gas services...**

- Qualified Gas Service Engineer
- Landlord Safety Certificates
- Magnaclean Power Flushing System
- Full Boiler Installation
- Bathroom Suites
- Kitchen Installations
- Extensions, Renovations
- All Jobbing and Maintenance

Jobs to do!

---

---

---

---

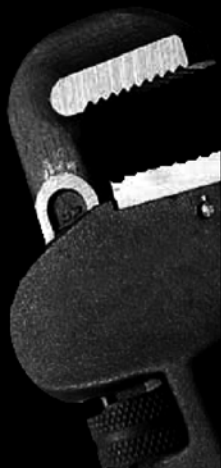
*No job too small!*

**tel: 077177 46473**

e: [info@balmedieph.co.uk](mailto:info@balmedieph.co.uk)

w: [www.balmedieph.co.uk](http://www.balmedieph.co.uk)

36 Pettens Close, Balmedie  
Aberdeenshire AB23 8WZ





# Newmachar Business Centre



**Are you tired of travelling into Aberdeen?**

**Are you fed up working on your own from home?**

Newmachar Business Centre offers professional and quality accommodation in a custom built centre with on site parking and good access to the Bridge of Don & Dyce.

Offices with short term and flexible leases are available

Contact 01651 863600 for more information

NEWMACHAR BUSINESS CENTRE

Unit 5, Kingseat Business Park, Kingseat Avenue, Newmachar AB21 0AZ

Web: [www.enetrust.com](http://www.enetrust.com) Email: [property@enetrust.com](mailto:property@enetrust.com)

 **enterprise**  
North East Trust

## Cadgers Garage

BELHELVE VILLAGE, ABERDEENSHIRE

**MOT  
TESTING  
STATION**

**LOCAL PICK-UP & DELIVERY SERVICE AVAILABLE**

**Mon – Fri: 8am – 6pm**

**Saturday: 8am –**

**MOT's •  
REPAIRS •  
SERVICING •  
BODY REPAIRS •  
PAINT SPRAYING •**



**Telephone:  
(01358) 742284**



# DON CABS

01224

828 828

**TAXI !**

4 – 7 SEAT VEHICLES AVAILABLE

ALL TYPES OF WORK UNDERTAKEN

24HRS --- 7 DAYS PER WEEK

ALL MAJOR CREDIT/DEBIT CARDS  
ACCEPTED

## BETTER BALMEDIE

The **Better Balmedie** Group is thriving with numbers growing. We were delighted to see that, despite the snow, our crocuses and daffodils flowered, adding splashes of colour to grassy areas in the village.

May has been a busy month. We have planted snowdrops and wild flower seeds and built four big wooden raised planters at three sites along Eigie Road. These will soon be planted with bedding plants, so the colourful corners will continue throughout the summer.

On 15<sup>th</sup> May we held a Litter Pick. 30 people gathered 6 wheelie-bins full of rubbish in two hours. It's a satisfying thing to do as a group, but it is depressing that so much litter is thrown down, especially as we have bins for glass, plastic and cans.

The Group has now been successful in obtaining some funding which will enable us to buy some equipment including a lawn mower and strimmer and to build some raised planters at Eigie House.

We have been busy preparing for our first plant sale to be held on 22<sup>nd</sup> May at Tarts and Crafts.

On Thursday 24<sup>th</sup> June we will be visiting the Cruickshank Botanic Garden in Old Aberdeen.

We have a full programme of events and club nights planned from August onwards. We'd love you to come along and join in – the more the merrier! We usually meet at Balmedie School on the last Thursday of the month.

For more information please ring **Rosie Nicol on 01358 742557** or email:

**[rosie.inform@lineone.net](mailto:rosie.inform@lineone.net)**

# **REID PLUMBING & HEATING SERVICES LTD.**

Reid Plumbing & Heating Services is a family run company which was founded over 28 years ago. We pride ourselves in delivering exceptional quality to all customers both residential and commercial. We specialise in:-

## **Bathrooms**

- Full design service
- New installations
- Refurbishment of existing
- Forming WC facilities in cupboards
- Towel rails

## **Tiling**

- Wall tiles
- Floor tiles
- Under tile heating
- Re-grouting existing tiling

## **Central Heating**

- Full design service
- New installations
- Boiler changes
- Upgrade of existing systems
- Designer radiators
- Boiler services
- Landlord Gas Safety certificates

## **Kitchens**

- Full design service
- New installations
- Refurbishment of existing
- Granite worktops
- Installation of gas appliances
- Cooker hoods

## **Gas Fires**

- New installations
- Upgrade/replacement of existing
- Servicing/gas safety checks

## **Traditional Plumbing**

- Lead work
- Cast iron gutters & downpipes
- Outside garden taps

If you wish to discuss any element of work we undertake, please do not hesitate to get in contact with George Reid.

## **Reid Plumbing & Heating Services Ltd.**



**Arborley  
North Beach Road  
Balmedie**

**01358 742339**



**Girlguiding**

Ythan District



*girls in the lead*

## **Back to the Future Camp**

Over the May holiday weekend 4 Guides, Rachel, Hannah, Jessica and Eleanor, one Young Leader Laura, and 2 Leaders Christine and Liz, all from the Belhelvie Banter Area took part in the Back to the Future Camp at Haddo House. Back to the Future Camp, one of many camps taking place around the UK was to celebrate 100 years of Girl Guiding. The 150 Guides who camped and the 10 Guides who visited for the day came from all over Gordon County and in the true spirit of Guiding many new and hopefully long lasting friendships were made.

The activities, based around the name of camp Back to the Future included a Decades Challenge giving the girls an insight into Guiding over the years and how Girl Guiding has developed and progressed with each new decade. The girls took part in many exciting activities including Falconry, Archery, Circus Skills and an Incident Hike all skills both past and present. The Diary Room a more recent activity proved to be very popular where the Guides recorded their thoughts about their time at camp and took some photographs, some even recorded where they thought Girl Guiding would go in the future. Gladiators and Hip Hop Dance sessions were also extremely well liked, as were the traditional campfire and Disco and Karaoke in the evenings.

No camp or Guide Activity would be complete without badges again old and new and one specially designed for the camp by an Ellon Guide. Some ladies from the Trefoil Guild, in fact a former Guide Gladys, now Mrs Cruickshank and a former Leader Miss Elizabeth Anderson with 1<sup>st</sup> Belhelvie Guides came along to help with backwoods cooking. Christine and Liz also enjoyed listening to the ladies stories about Guiding when they were young.

The last opportunity ever to gain the Guides on Air 1985 – 2010 Badge at was taken up by Hannah, Jessica, Rachel, Eleanor and Laura at the Radio Communication Tent. Everyone had a turn at spelling their name phonetically and the town where their Guides meet, then speaking to someone at another camp some as far away as London and Germany. Christine and Liz managed to escape the catering tent for half an hour to join in on this activity and also gained their Guides on Air 1985 – 2010 Badge.

The weather was not too unkind and everyone came away with some fantastic memories.

*Liz Michie*

District Assistant for Ythan District



## Rowancott Herbs

Herbal medicine and Aromatherapy massage provide a real and holistic alternative for chronic, stress-related & many other health problems.

*Erica Hollis BSc MNIMH*

tel: 01651 862359

mob: 07817 181072

for more details see:

[www.rowancottherbs.co.uk](http://www.rowancottherbs.co.uk)

## ARDO CLASSICS



Car hire

for all special occasions,  
Weddings, Anniversaries,  
Graduations etc.

*We will drive you round the  
bend with style*

[www.ardoclassics.co.uk](http://www.ardoclassics.co.uk)

Tel: 01358 743011



DIANE WHYTE  
photography



24 Menie Crescent . Balmedie . Aberdeenshire . AB23 8ZW t. 07980 749541 e. [dianewhyte10@hotmail.com](mailto:dianewhyte10@hotmail.com)

[www.dianewhytephotography.com](http://www.dianewhytephotography.com)



## **The PAGES Group**

**Who are we?** **PAGES** is a group which was set up by parents to meet the needs of children and young people with additional support needs (ASN) in Aberdeenshire but primarily in and around the Ellon area and to provide support and advice to parents and carers of children with ASN.

The group was founded in 2002 and became a registered charity in October 2003; our Charity registration number is SC035205. We are run by volunteers most of whom are mum's who have children with ASN.

We use the old Esslemont primary school just outside Ellon as a base for our activities and we aim to provide social opportunities for young people who find it difficult to access mainstream activities.

### **What do we offer?**

**PAGES** provides after school and holiday activities for children with ASN and their siblings. Currently we run a fortnightly Youth Club for primary school age children, weekly football training sessions and a science and nature group in conjunction with SNH/RSPB which is for all ages. We also run holiday activities which have included swimming, tubing at Alford (parents seem to enjoy this as much as the children), drumming sessions, "Music 4 U Sessions" and science and nature activities.

We are also trying to develop a social group for the older children and are working with the Active Schools Co-ordinator for the Ellon area to try to provide a programme of taster sessions of different activities for our group members to enjoy.

**PAGES** host information evenings, and parents and carers meet for informal coffee mornings and information sharing. Please visit our website on **[www.pagesaberdeenshire.com](http://www.pagesaberdeenshire.com)** for dates and times of activities and for more information.

**How do you join?** We have an annual membership fee of £15 per family which helps towards insurance and running costs. New members are always welcome. Please contact Alison Leighton (Chairperson) on 01358 743946 or email **[pages2002@hotmail.co.uk](mailto:pages2002@hotmail.co.uk)** if you would like more information or for an application form.

**-Community Shop and Post Office –  
Family owned for over fifty years  
Friendly place to shop offering newspaper  
deliveries and National Lottery**



# **Dickies Pharmacy**

Opening Hours

Mon-Fri: 9.00am – 5.30pm

Saturday: 9.00am – 12.30pm

Rowan Drive,

Balmedie.

AB23 8SW

Tel: 01358 741226

## Services

- A prescription collection service from the following local surgeries:  
Ellon Health Centre, Danestone Medical Practice, Jesmond Drive,  
Oldmachar Medical Practice and Scotstown Medical Group
- We can provide oxygen cylinders for patients.
- Disposal of Unwanted and Expired Medicines.
- A NHS supported stop smoking programme.
- Emergency Hormonal Contraception.
- The Minor Ailment Service.
- Confidential advice and support.
- Coming Soon is the new Chronic Medication Service!



# **Adept Driver Training**

**With Michelle D' Auvergne**

- **Female Instructor**
- **High pass rate**
- **Hourly lessons**
- **Free study packs**
- **Block booking discounts**
- **Evenings and weekends**

**Call on**

**07791 412759**

**01358 742400**



**Mildden Steading East, Balmedie AB23 8YY**

# Balmedie Pet Crematorium Ltd



Wardhead Croft, Balmedie,  
Aberdeenshire, AB23 8YJ  
Phone: 01358 742753, Mobile: 07818 408195

[www.balmediepetcrematorium.co.uk](http://www.balmediepetcrematorium.co.uk)

*At Balmedie Pet Crematorium,  
we offer a dignified and private  
cremation service for your pet.*

*Please call or visit our website  
for further information*

## Douglas Leal

Chiropodist / Podiatrist

*Surgery*

10 (basement) Crimon Place  
Aberdeen

Telephone  
01224 639379  
or  
01358 742620  
HPC REG. CH17891

### Treatments

### Include

Local Anaesthetics  
Nail Surgery  
Ingrown nails  
Corns  
Callus  
Diabetic Care  
Insoles for Fallen  
Arches

**Home Visits Available**

## BIKE SMART

**THE ONE STOP SHOP FOR  
ALL MOTORCYCLISTS**

**Clothing • Helmets  
Gloves • Luggage  
Boots • Accessories**

**50cc to 125cc Motorcycle Sales  
Motorcycle Training & Testing**

[www.bike-smart.co.uk](http://www.bike-smart.co.uk)

[www.scotbiker.com](http://www.scotbiker.com)

**244 King Street, Aberdeen  
01224 624777**



CHAPEL PARK

## BED AND BREAKFAST

**Innes & Rowena Jessiman**

**Chapelark  
Whitecairns  
ABERDEEN**

**AB23 8UQ**

**Scotland**

**Tel: 01358 742218**

**Mobile: 07712 086 407**

***Chapelark@btinternet.com***

**Company Lets Welcome**

## BALMEDIE LIBRARY

Eigie Road, Balmedie

Tel: 01358 742045

### OPENING TIMES

Monday	2.30 – 4.30	5.30 – 7.30
Tuesday	Closed	
Wednesday	2.30 – 4.30	5.30 – 7.30
Thursday	10.00 – 1.00	
Friday	Closed	
Saturday	10.00 – 1.00	

The first Thursday of each month (term time only), there is a Rhymetime session for under-fives from 11.30 – 12.30 come along and join in the fun.

Adult and Junior Books, Talking Books, DVD's and CD's  
Photocopier, free internet access and scanner available

## Lady & Tramp

Professional Dog Grooming Salon

City and Guilds Qualified

Member of Pet Care Trust

Over 20 years of experience

Ample off-road parking



Leaigg  
Lower Rannieshill  
Newmachar  
AB21 0UF

Tel: 01651 869260

## **SUMMER READING CHALLENGE**

This year's Summer Reading Challenge is called Celebrate With A Good Book. The theme reflects the fact that the Summer Reading Challenge has been running in its present format and has been supported by Total E&P UK for 10 years. The Challenge will run from the 17th June until the 27th August. There will be 3 age groups as follows: 6 and under, 7-9 and 10 plus. Each child taking part will receive a themed card to record details of the books they have read. To complete the challenge children must read 6 books and for each book read they will collect a sticker for their card and when their card is completed they will receive a certificate and they can choose either a book, a calculator, a highlighter pen or a multi-media voucher that will entitle them to the free hire of a CD, Video or DVD from library stock.

### **Book Review Competition**

On completion of the challenge, children will be invited to review their favourite book. Pre-printed entry forms for this competition will be available from libraries for children to fill in.. Children 6 & under can draw a picture and the older groups will be asked to write a short review. . Each branch and mobile library will award a book token prize for the best review in each of the 3 age groups. All prizes will be awarded at an Aberdeenshire-wide prizegiving in October.

### **Model Celebration Cake**

This is open to all children whether or not they are taking part in the reading challenge. Children will be asked to make a model of a celebration cake. There will be book token prizes for the winning entry in all 3 age groups and from those, one overall winner will be chosen. The overall winner will receive a book token and a real cake will be made from their design which they will be able to take home at the end of the prizegiving. Entry forms with full details of the competition will be available from all libraries and can also be downloaded from:

**[www.aberdeenshire.gov.uk/libraries/young\\_people](http://www.aberdeenshire.gov.uk/libraries/young_people)**

# Sizzling Summer?

Heat up your barbecue with mouth-watering meat from The**Store**



**COFFEE SHOP  
OPENING JUNE**

## The**Store**

*our farm, our passion - your lifestyle*

Family and corporate BBQ's catered for

- Aberdeen Angus Beef • Homebred Lamb
- Locally Sourced Veg • Chef Prepared Meals

Visit our farm shop. Open 7 days a week.

We can deliver to your door  
in the Aberdeenshire area.

Westfield, Foveran, Aberdeenshire AB41 6AY

**01358 788 083**

**[www.thestorecompany.co.uk](http://www.thestorecompany.co.uk)**





## **HOME IMPROVEMENTS**

✓ **WINDOWS, DOORS AND ROOFLINE**

✓ **CONSERVATORY DESIGN AND INSTALLATION**

✓ **KITCHEN PLANNING AND INSTALLATION**

✓ **BATHROOM PLANNING AND INSTALLATION**

✓ **CONVERSIONS AND EXTENSIONS**

✓ **INSURANCE REPAIRS**



**ABC Ltd, Unit 4, Scotstown Road  
Bridge of Don, ABERDEEN, AB23 8HG**

**Tel 01224 823800**

**[www.abcscotland.co.uk](http://www.abcscotland.co.uk)**

## BALMEDIE CONGREGATIONAL CHURCH

We meet in Balmedie Leisure centre at 11.00am on Sunday mornings and are informal and family friendly.

Our services comprise of an adult address with prayer time and some singing interspersed. We enjoy traditional hymns right up to modern worship songs. We aim to make everyone feel at home.

We appreciate all the help and support we have received from the people of Balmedie over the last 16 years or so. We look forward to continuing to be the church in the village of Balmedie.

We are please to serve the community. If we can help you or your family in any way please contact.

**Katrina Thomson**

**Tel - 01779 812132**

**Barrett & Coe** *fantastic photography*

**Get together and capture the moment forever**

Buy a photography adventure for just **£24.95** and receive:

- A **one hour** family photography session
- A **viewing appointment** showcasing the images from your session arranged at your convenience
- One **7"x5" contemporary framed family portrait** of your choice

**To book call 01358 743061**

**[www.barrettandcoe.co.uk/aberdeen](http://www.barrettandcoe.co.uk/aberdeen)**



# NEOS

north east open studios

## North East Open Studios

Opening Doors to Creativity

The seventh annual open studios event will take place from 10<sup>th</sup> September to 19<sup>th</sup> September 2010 here in the North East of Scotland.

Artists, makers and galleries will welcome visitors to a close up and personal experience of the Artistic process. Free catalogues with details of all the 254 participants will be available all around the North East in August, and locally from Tarts and Crafts café or the Balmedie Library.

For a contemporary Art experience during N.E.O.S. visit Ardo Studio Gallery at Ardo House, Whitecairns and discover the extraordinary. A selected group of artists have been invited to respond through the medium of installation, sculpture, film and painting to this year's theme of 'Treasure'. All the work can be experienced within the tranquil setting of the extensive grounds.

For more information: [www.northeastopenstudios.co.uk](http://www.northeastopenstudios.co.uk)  
[www.ardotreasure2010.co.uk](http://www.ardotreasure2010.co.uk)

## D.G. PAINTER



**Painting & Decorating Service**  
**Wallpaper Hanging**  
**Domestic & Commercial**  
**Interior & Exterior Painting**  
**Quality & Competitive Work**  
**Free Quotations & Free Advice**

**Phone Douglas on**  
**07975 512 456**  
**to get a Free Quote**

## CARLE'S SHEDS



*Another Quality Shed*

*For a wide range of Garden  
Sheds, Summer Houses, Garages,  
Kennels, Loose Boxes and Field  
Shelters*

**Tel: 01224 722445**

[raymond.barclay@btconnect.com](mailto:raymond.barclay@btconnect.com)

[www.carlessheds.co.uk](http://www.carlessheds.co.uk)

**Moss-Side, Parkhill, Dyce,  
Aberdeen, AB21 7AS**



# Graeme Isaac

## Joinery Services Ltd

### **Preservation Division**

- ✓ Rising Damp
- ✓ Dry Rot
- ✓ Wet Rot
- ✓ Woodworm
- ✓ Solum Treatments
- ✓ Cellar tanking
- ✓ C & S Guarantee

### **Building Division**

- ✓ Insurance Work
- ✓ Extensions
- ✓ Loft Conversions
- ✓ Renovations
- ✓ PVC Windows & Doors
- ✓ Kitchens/Bathroom
- ✓ Flooring/Decking

**No job too small - for free Estimates and Advice**

**Tel: 01358 743199**

**Mob: 07973 259242**

**email: [g@isaacjoinery.co.uk](mailto:g@isaacjoinery.co.uk)**

# ROBECK AUTO

## Car Repairs & Servicing

**ATA Technicians**

**Tel 01224 524217 (Evening)**

**Mob 07765 683183 (Day)**

**[robeckauto@ymail.com](mailto:robeckauto@ymail.com)**

**FREE ESTIMATES**



## **Bridge of Don Academy Snippets**

Recently pupils from our three primary schools spent a day in the Academy and learned more about their move into S1 later this year, as well as having the opportunity to spend some time in various departments. In the Science Dept they learned about safe working in a laboratory and were able to try for themselves a range of experiments – ably assisted by some of our S3 pupils. We enjoyed this chance to show them around and look forward to seeing them later this month for an extended visit.

The S1 and S2 pupils are looking forward to early June when they take part in Activities week, which is an opportunity for them to develop an awareness of how leisure time can be used. This year sees pupils going to Spain, London, the Falkirk Wheel, Stirling Jail, Discovery Point and Capt Scott's ship in Dundee. Local activities include murder mystery trails in Old Aberdeen, paintballing, various sports, historical and culture of Aberdeen and painting a mural in the school!

Many Geography and Science classes have been planning native tree species around the school in co-operation with the Rangers.

## **Duke of Edinburgh Scheme**

At present a large group of pupils from S3-S6 are currently working towards a Bronze or Silver Duke of Edinburgh's Award. Chris Wildi and Craig Peet have almost completed their Gold Awards. Many of the Academy pupils have assisted in voluntary capacities as part of their service at brownies, Cubs and football coaching

In Modern Studies, S1 pupils learned through role play how an actual trial would be carried out. All the pupils were given a role to play, witnesses, judges defendant and solicitors. Our 2<sup>nd</sup> years carried out mock elections. Pupils spent some time planning and organising an election campaign for a political party. On Election Day, each candidate gave a speech, took questions from the floor and then everyone who voted for the candidate they thought would best improve the lives of the people in Aberdeen.

During the winter a group of pupils accompanied by 2 teachers spent a week in Les Menuires in South East France improving their language and skiing skills as well as to see and experience, first hand, some geological features. During the evenings, après-ski activities included swimming, bum-boarding, a town trail, football, a games night, crêpe making and a disco. Everyone enjoyed themselves.

*Let's get out and about with ... ..*



## **ABERDEENSHIRE COUNCIL RANGER SERVICE**

The United Nations has proclaimed 2010 the International Year of Biodiversity. People all over the world will be joining in the celebrations, discovering more and working to combat biodiversity loss.

You can join in too. Why not come along to our events and discover the biodiversity we have on our doorstep.

**On Saturday 24th July, 1.30 – 3.00pm** The Aberdeenshire Council Ranger Service is holding a **SCAVENGER HUNT**.

Come along and have some fun scavenging around Balmedie Beach to see what you can find. Learn some interesting facts about what you have managed to collect. Wellies and waterproofs recommended. And bring along a plastic bag to collect your findings.

MEET: at the play park at Balmedie (car park charges apply)

CONTACT: the Coastal Ranger on 01358 751337 for details

Other events planned in the area include:

Tuesday 15 June                      **Nordic Walking at Forvie**                      6.30 -8.30pm

Contact Coastal Ranger on 01358 751337 for more details

Sunday 15 August                      **Wildlife Crime (Haddo House)**                      10.30 -3.30pm

Contact Formartine Ranger on 01358 726417 for more details

Details of all events in Aberdeenshire can be found at:

**[www.aberdeenshire.gov.uk/rangerservice/events/SummerEvents](http://www.aberdeenshire.gov.uk/rangerservice/events/SummerEvents)**

*(continued)*

## *And looking ahead .....*

**BEACH WATCH**      **Sunday 19th September**      **from 10.00am**

Meet: at Balmedie Country Park (car park charges apply)

Contact: the Coastal Ranger on 01358 751337

This is the weekend when beach litter surveys are happening all over the world, why not come along and do your bit for your local beach?

Organised by the Marine Conservation Society in Britain, this annual event monitors litter found on beaches and uses the information collected to improve the state of beaches for people and wildlife.

Join in the UK's biggest beach clean and help to remove and record the rubbish from a beach near you. A fun and rewarding day for all the family. Please book in advance and wear appropriate clothing and footwear. Gloves and rubbish bags will be provided.

### **Cadgers Taxis And Minibus Hire**

**4/8/16 Seater Cars & Minibuses**

**People Carrier • Contacts  
School Runs**

**3 Scott Terrace**

**Belhelvie**

**AB23 8YT**

**01358 742370**



### **Pauline Wood Antiques and Collectables**



**Specialising in Grandfather  
Clocks and Quality  
Furniture  
Antiques Bought and Sold**

**Tel: 01358 743002**

**Jalna Manse Road,  
Potterton**

**Email : pwac@supanet.com**

## LANDSHARE

**Landshare** was set up by Hugh Fearnley-Whittingstall of Channel 4's River Cottage early in 2009. Landshare brings together people who have land to spare, to share with people who have a passion to grow their own food. There are currently 47500 members and its growing! Aberdeenshire has around 80 members.

At Muirton House we are trying to put some life back into the Georgian walled garden. Once a working kitchen garden, it has, in more recent times, been laid to lawn. We joined Landshare last year in an attempt to bring back the kitchen garden feel and to create fruit and vegetable plots in the garden. We have started a couple of our own plots and now also have Sarah and Jackie, teachers from Ellon, working in the garden on their own plot. We have planted box hedging to divide plots and have also created a border of lupins grown from seed next to the greenhouse on the South facing wall, which provides an attractive spot for a break and cup of tea!

Still very much in the early stages and only in our second year, we are still trying out varieties to see what works best in the cooler North East climate! Potatoes and broad beans have been very successful along with lettuce, beetroot, leeks, rhubarb, black currants. Courgettes and pumpkin have not done well but we continue to try!

Via Landshare I have also found myself a part time job supporting a lady with special needs enabling her to experience the outdoors and to develop a sense of achievement through gardening . Gardening therapy promotes physical health through exercise, a sense of purpose, develops new skills and provides a stimulating outdoors experience for people of all abilities and ages.

We still have land available for Landshare either in the walled garden or paddock and we always need general help around the gardens, if anyone wishes to get involved! We are also looking for a local farmer willing to plough the paddock for us!

For further information or to get involved please contact:

**Louise Stedman e mail [muirtonhouse@btinternet.com](mailto:muirtonhouse@btinternet.com)**

# For your next MOT or SERVICE contact our Balmedie Workshop



## Services we offer:



MOT



Servicing



Exhausts



Tyres



Clutch



**FREE** Courtesy Car



Brakes



Established 1953

Old Aberdeen Road ■ **Balmedie** ■ 01358 4743470

For further details and to view over 100 used cars click onto:

Address



[www.lawrenceofkemany.co.uk](http://www.lawrenceofkemany.co.uk)



Go

## ***CONGRATULATIONS YOU'VE PASSED !!!!***

Want to improve your confidence, driving skills and save money on insurance? Statistics show that new drivers are more likely to have an accident in the first two years following their test due to inexperience.

**Pass plus** aims to raise driving standards by equipping new drivers to have skills to deal with situations when driving alone.

**Pass plus** has to be completed within a year of passing your test. The instructor has to be approved by the Driving Standards Agency and **Pass plus** registered.

There are six modules within a minimum of six hours to cover enhancing skills, knowledge, and driving experiences all under SAFE guidance. Local authorities are working along with DSA to encourage the completion of **Pass Plus** and are donating £45 towards course fees. Aberdeenshire council community safety group are contributing £100 towards fees also. Funding must be applied for BEFORE starting.

At the end of the course the instructor completes a progress report and forwards it to DSA. Then a certificate is awarded to pass on to insurance companies for reductions.

**MONEY SPENT ON LESSONS WOULD BE CHEAPER THAN A FUNERAL FOR YOUR CHILD**

*Article submitted by Newmachar School of Motoring.*

**PATIENT, FRIENDLY DRIVING TUITION**  
**FROM A SCHOOL WITH AN EXCELLENT FIRST TIME PASS RATE!**

- Full 1 hour tuition • Refresher courses • Dual controls •
- Gift vouchers available • Competitive prices •

**NEWMACHAR**  
**SCHOOL OF MOTORING**

**(01651) 862765**  
C. EDWARDS  
TREEWELLS, NEWMACHAR

**ADDITIONAL INFORMATION:**  
• PASSED (2 signs)  
• PASSED (circular logo)  
• ADI (Association of Driving Instructors logo)  
• Car illustration

New dance aerobic classes  
**FIRST CLASS FREE!!!**

Classes held at Forsyth Hall, Belhelvie  
Mon. & Wed. evenings 8-9pm  
Saturday 9.45am

Just bring yourself along to any  
of the classes together with  
a smile and bouncy trainers!

For more information contact:  
Claire Murray  
01358 721038 or 07824 552883  
[www.jazzerciseaberdeenshire.co.uk](http://www.jazzerciseaberdeenshire.co.uk)

**jazzercise**  
it shows<sup>®</sup>



cardio



strength



stretch

[jazzercise.com](http://jazzercise.com)

**Martin Stallard**  
**GARDEN MAINTENANCE**  
&  
**LANDSCAPING**

fencing, hedge cutting, bush  
trimming, tree & shrub planting

&

grass mowing

Debris removed

One off garden tidy ups

or

gardens looked after on a  
regular basis

Telephone

01358 742833

07778344855

***For Quality Service & Price***



**NU-LOOK**

We manufacture white/woodgrain /Oak

- PVCU Windows • Doors
- conservatories
- Facia and soffit cladding

All aspects of joinery work undertaken, alterations,  
home extensions, new build - planning to completion.

**SHOW CONSERVATORY NOW OPEN**

**TRADE ENQUIRIES WELCOME**

For a free Quotation call 8am to 5pm

**01224 704344**

**Fax: 01224 708645 & Mobile : 07885 573508**

**Nu-Look,  
Blackdog Croft,  
Murcar,  
Bridge of Don,  
Aberdeen**

## BELHELVIE CHURCH

As part of **Balmedie Gala**, the Social Committee is to be having a 99p stall on the day and hope to see a good turnout on Saturday 19<sup>th</sup> June.

We are to be running a '**Couples Course**' in the Autumn following on from the very successful 'Parenting Course' held in 2009. It will be a chance for couples to spend a bit of quality time together thinking and talking about their relationship. An evening meal will be provided after which they will watch part of a DVD together before breaking up into couples to reflect on what's been seen and heard. Look out for more details soon.

**Belhelvie Church is now on Facebook** so folk can add us to their 'Friends' list and be up to date with what's happening in the church throughout the year.

Further information from Doreen: 01358 742309 or Arthur: 01358 743628

---

## TARTS AND CRAFTS

Tarts and Crafts cafe & gallery is situated behind the Library in Balmedie - just follow our signs. We have good parking facilities and disabled access. We are staffed entirely by volunteers and aim to meet the needs of the community by providing a much-needed meeting point. Any profits made are given to suitable local projects.

We serve delicious home-cooked food, catering for all tastes and special dietary requirements. All soups, cakes, and bread rolls are baked on the premises using fair-trade ingredients where possible. We serve fair-trade coffee along with a variety of herbal teas.

Our craft section is an outlet for local artists and crafters. You can buy anything from handmade chocolate to jewellery and wood turned bowls. We have solo exhibitions by local artists which change every month in a wide variety of mediums. Workshops and demonstrations are organised on a regular basis giving you the chance to try some of the crafts for yourselves. Our opening times are 10 – 4pm on Weds, Thurs, Fri and Saturday. Please come and visit us to sample our home bakes and relax in a friendly atmosphere, whilst shopping for that unique gift.

**We are always looking for volunteers so please contact the cafe by email or phone to ask – as little as 2 hours a week would be much appreciated. Contact us on 01358 742002**

*ServiceMASTER*  
*Clean.*

# Carpets & Upholstery

**Professionally cleaned**



**Because there is no one more serious about service**



Deep cleaning plus fast drying for Carpets and upholstery using the latest Truckmount technology.



Hard floors stripped and sealed including Amtico and Karndean, leather renovation, carpet and fabric protection and more!



Recommended by leading manufacturers and Insurance companies.

**ServiceMaster(Aberdeen) [www.servicemaster.co.uk](http://www.servicemaster.co.uk)**

**01358 741199 07912 781368**

**email: [servicemasterabdn@btinternet.com](mailto:servicemasterabdn@btinternet.com)**

**20 Tormentil Crescent, Balmedie, AB23 8SY**

# Balmedie Hair and Beauty

Unit 1 Whitehorse Buildings, Balmedie, 01358 742888

*A full range of hair & beauty treatments including ....*



*Colour treatments*

*Racoon hair extensions*

*Weft extensions*

*Acrylic / Gel nail extensions*

*Waxing*

*Bio-gel overlays*

*Eyelash extensions*

*St Tropez spray tanning*

## 20% off

With this voucher from the Belhelvie Banter

**positivepaws**  
puppy school



## Invitation to puppy owners

Have fun socialising and training your puppy using kind, effective, modern methods in a relaxed, family-friendly environment

**Small classes for individual attention with a qualified instructor**

**CLASSES HELD AT WHITERASHES HALL**

Puppies accepted from completion of vaccination course.

**One-to-One training available for dogs of all ages**

For further details contact:

**Billie Machell** DipCABT, MAPDT 00748

**Tel: 01651 862310**

[www.positive-paws.com](http://www.positive-paws.com)



## BELHELVIE FRIENDSHIP GROUP

The club welcomes members aged 50+. Meetings are held in the lounge at Egie House, Balmedie on Tuesdays fortnightly from 2-4pm.

**Please note** Although the group meets in Balmedie, it is open to all residents of Belhelvie Parish and new members are made very welcome.

June 22<sup>nd</sup>

Whist and Triominoes or Bingo

The group is then taking a summer break and their first meeting after the summer recess will be on 31<sup>st</sup> August

Members pay £2 per meeting and bring a small raffle prize; this covers tea and biscuits and the raffle ticket.

For further information please contact:

Mr Vic Deans

Mrs Margaret Murison

President

Secretary

01358 743634

01358 742285

**CBT Courses 7 Days Per Week**  
**50cc / 125cc & Direct Access**  
**Bikes, Helmets, Clothing & Gloves Supplied**

**L CMS**

**Onsite Toilet Facilities**  
**50cc & 125cc Bike Sales**  
**Professional Instructors**  
**Shop Discount Scheme**  
**Gift Vouchers & Mail Order Available**

**01224 624777**

**244 King St, Aberdeen AB24 5BW**  
**www.cms-scotland.co.uk**

**BIKE SMART**

**Ozone**  
**Friendly**  
**Cleaning**  
**Company**



**Marilyn Sinclair**  
**Manager/Proprietor**

tel: 01358 789 390  
mob: 07947102858  
ofc\_company@btinternet.com  
www.ofc\_company.co.uk

**Over 30 years experience in the cleaning industry**

# BELHELVIE YOUNG FARMERS CLUB

**Belhelvie Young Farmers Club** is always looking for new members aged between 14-26 years of age. We have summer and winter programmes which run approximately from early May to mid July and from end of September to the end of January. We meet about every two weeks to take part in a range of meetings including stock judging, mock auctions, farm walks, bowling and ice skating, to name a few. Our club also participates in various activities such as agricultural skills, farm management quizzes, tug of wars and takes part in local agricultural show competitions - for example entering baking, crafts and stock judging.

We are partially through our summer programme and so far have been to the golf driving range and a tour of a trawler. However, we still have several meetings to look forward to, including two stock judging competitions, a farm walk and our popular field day.

Our winter programme is still to be confirmed but we are hoping to take part in a range of activities and tours including possibly tours of a fish factory and a radio station. As well as some of our usual winter meetings which have proved very popular with our current members.

If you are between the ages of 14-26 and interested in joining or just want to come along and see if it is for you feel free to call Caroline on 07751 112205 or alternatively email [caz\\_007@live.co.uk](mailto:caz_007@live.co.uk).

Caroline sent in this photograph of Belhelvie Young Farmers in their new rugby shirts



# **SAVE UP TO £600 ON REPLACEMENT BOILERS**

**FULLY INSTALLED FROM...**

**16KW CONVENTIONAL HE ..... £1495**

**26KW COMBI HE ..... £1825**

**35KW COMBI HE ..... £2095**

**ALL WITH 5 YEAR MANUFACTURER'S WARRANTIES.**

**FULLY INCLUSIVE OF VAT**

# **ABERDEEN HEATING**

**Unit 4 Scotstown Road,  
Aberdeen**

**Tel. 01224 708866**

**[www.aberdeenheating.co.uk](http://www.aberdeenheating.co.uk)**



## 3<sup>RD</sup> BELHELVIE BROWNIES

We've been very busy since the Spring edition of Belhelvie Banter and badges gained include swimmers, campers, craft and speakers.

We joined the whole of Gordon County Brownies on the Brownie Takeover of Dalguise PGL Adventure Centre. It was '*brill*' - there were loads of Brownies there. We tried lots of new activities, such as abseiling, giant swings, very muddy obstacle courses, archery and climbing the vertical obstacle challenges.

We've been camping and we took another Brownie unit with us and made lots of new friends. Our theme was Alice in Wonderland. Amongst other things, we made giant flowers, played croquet, we followed a trail of playing cards, had a camp fire and we decorated white rabbits fans.



We joined a costume workshop at Balmedie library where we designed costumes we'd like to wear. We could use any materials we liked to design our costumes and we all made something we thought would be great to wear.

On Polling day we had to change our venue as the residents of Potterton use the community centre for voting; so we had an outdoor meeting at Haddo House, which was fun. We played with compasses and followed a route to find the things needed to cook sausages on disposable barbeques.

Everyone has great fun and really enjoys their Brownie Time.

Contact: **Katherine Hebron-Scott 01330 833448 for details.**

Mobile Library Locations			Arrive	Depart
Wednesday Every week	Potterton	Kirkhill Road	15.00	15.30
		Car park	15.35	15.55
		Denview Road	16.00	16.30
Week 1 Thursday	Belhelvie area	Parkhill	09.45	10.10
		Braehead	10.25	10.45
Week 2 Thursday	Blackdog	Kindergarten	09.45	10.15
	Balmedie	Balmedie House	12.30	13.00
		Eigie House	14.00	14.30
	Belhelvie area	Chance Inn Farm	14.40	14.55
		Wardhillock Farm	15.00	15.15
		Middlemuir	15.30	15.45
	Belhelvie	Scott Grove	15.50	16.00
		Park Terrace	16.05	16.15



# ARDENE HOUSE

VETERINARY PRACTICE

**PROVIDING FIRST RATE MEDICAL CARE FOR ALL YOUR PETS**

- VET & NURSE ON SITE 24/7 FOR EMERGENCIES & ADVICE
- ROUTINE MEDICAL CARE AND VACCINATIONS
- ULTRASOUND SCANNING, DIGITAL X-RAYS, ENDOSCOPY
- VISITING SPECIALISTS IN CARDIOLOGY, OPHTHALMOLOGY, INTERNAL MEDICINE, SOFT TISSUE SURGERY, DERMATOLOGY & BEHAVIOURIST

**Veterinary Surgery & Hospital**  
**Skene Road, Kingswells**  
**Aberdeen Tel: 01224 740700**

**Veterinary Surgery**  
**Jesmond Drive, Bridge of Don**  
**Aberdeen Tel 01224 826121**

**AMPLE FREE PARKING AT BOTH SURGERIES**

www.victoriagarage-belhelvie.co.uk



# Victoria Garage

## Used German Car Specialist

Suppliers of Newly New  
and Quality Used Cars

---

Full Garage Services  
Available

---

Local and Friendly  
with the  
Knowledge and  
Experience to Help

Victoria Hall, Belhelvie, Aberdeenshire, AB23 8YR

Tel: 01358 743053 Mob: 07887 536987 [www.victoriagarage-belhelvie.co.uk](http://www.victoriagarage-belhelvie.co.uk)

## Balmedie Playgroup

We have been busy playing indoors and out. In the playroom we have been having fun playing, making a Jack and the Beanstalk wall display, painting flowers for the notice board, baking all sorts of yummy snacks and getting to sit in a real police van.

We have sown potatoes, sunflowers, marigolds and Livingston daisies and are looking forward to seeing some lovely colours in our planters.

We have also been exploring the local area with trips out to the burn to get more water for our tadpoles, the magic woods where we even found a den and the local shops for our snacks. We also had a very successful trip to the airport Fire Station and are looking forward to our summer trip to Dizzy Rascalls next month.

We are also collecting second hand toys and good- as- new children's clothes for our stall at the Balmedie Gala.

It's hard to believe that we are in to our last term of the year; places are still available for next session. Children may attend up to five sessions per week with a mixture of morning and afternoon sessions available. Sessions are led by playgroup staff and there's a rota for parental help. Activities for children aged 3-5 years are planned around the "Curriculum for Excellence"

**Balmedie Playgroup,  
Community Room,  
Balmedie Primary School  
Telephone 07923 470741**

For further information or details regarding current vacancies please contact us on the above number.

### NEW MANAGEMENT & NEW HEAD CHEF NATHAN HAGUE

FROM COVE BAY HOTEL WITH BRAND  
NEW MENU MUCH IMPROVED MENU  
AND QUALITY OF FOOD



**White  
Horse  
INN**

WHITE HORSE INN, OLD ROAD, BALMEDIE,  
ABERDEEN. AB238XR T : 01358 742 404

## ROMAN CATHOLIC CHURCH

The Roman Catholic Church is St Columba's, Braehead Drive, Bridge of Don. We are a friendly, welcoming community with a lot going on.

### Mass Times:

**Bridge of Don** - St Columba's: Sunday at 9.45am includes Children's Liturgy. Mass also on Wednesday and Saturday at 10.00am.

**Ellon** - Our Lady & St John the Baptist, Union Street, Ellon: Sunday at 10.30am.

For details of other services contact the parish office 01224 621581 or <http://stcolumbas.bridgeofdon.org.uk>

### Other Activities:

- Youth Group: Monday at 6.30pm
- Prayer Group: Tuesday at 7.30pm
- House groups in Balmedie and Potterton.

For details, please contact parish office.

- Silent prayer before the Blessed Sacrament : Thursday at 6.00pm
- Healing Service: 1st Thursday of each month at 7.30pm
- Divine mercy devotions: Friday at 2.30pm
- First Friday Devotions: 1<sup>st</sup> Friday of each month at 9.30am

### Parish school

Free transport is available to St Peter's Primary in King Street, Aberdeen.

The Headteacher is Mrs Jo Martin.

For further details contact 01224 485611 or [www.st-peters.aberdeen.sch.uk](http://www.st-peters.aberdeen.sch.uk)

## BELHELVE COMMUNITY COUNCIL

The last 3 months has seen an increase in activity with the approach of summer and the organisation of a number of events which are due to take place during the summer months.

This last month saw the official opening of the new 5-a-side pitches adjacent to the Balmedie Leisure Centre by The First Minister, Alex Salmond. The inaugural games were played by 2 junior football teams from Balmedie Primary School and a presentation of football equipment was made to the school teams by Mark McGhee, Aberdeen Manager with each team member being given a plaque to commemorate the event.

This month will see the Balmedie Gala taking place in the primary school. This event is on Saturday, 19<sup>th</sup> June and will commence with a parade from the Leisure Centre to the school car park where the gala will be officially opened. We have over 40 different types of stalls which includes demonstrations of Kite Flying by Synergy Kitesports, entertainment from the Guarana Street Drummers and the ever popular Bouncy Castle. Fuller details on the gala can be found in the Gala Day article.

The beginning of June also sees the planting of the summer flowers throughout the villages and we have been busy constructing raised beds to display these. Our grateful thanks go to David Watson of East Aberdeenshire Golf Club who provided the railway sleepers for the raised beds and to Brian Milne of Balmedie Mushroom Farm for supplying the earth. **We now very urgently require help with the planting and anyone who can help should contact Wishart McBride on 01358 742884 or any member of the Community Council.**

Looking ahead, we are planning a Potterton Project for Saturday, 4<sup>th</sup> September and are targeting the villages of Belhelvie, Potterton and Blackdog to come along to our open day and tell us what they like and dislike about their village. We have sums of money allocated to us to spend on improvements within the villages and want you to tell us how best to use it. We will be popping a flyer through your letter box a bit nearer the time to remind you so come along and have a chat.

**Belhelvie Community Council**  
**email: [belhelviecc@yahoo.co.uk](mailto:belhelviecc@yahoo.co.uk)**



# BalmedieGala 2010

**SATURDAY 19<sup>TH</sup> JUNE 2010**

**12 NOON TO 4PM**

**BALMEDIE PRIMARY SCHOOL**

**FUN DAY FOR EVERYONE**

**ADMISSION FREE**

**STALLS :** Wheel Of Fortune, Plants, Bingo, 99p Stall, Face Painting, Bottle Stall, Books, Crafts, Toys & Baby Clothes, Chocolate Stall and lots, lots more

**OUTSIDE :** Bouncy Castle, Kite Flying Demonstrations, Basketball, Toss The Caber, 'O' Look, Guarana Street Drummers, Fire Engine, Refreshments Tent

**GYMNASIUM :** Demonstrations Of Aerobics, Sooyan Do, Karate, Highland Dancing and Musical Theatre

**FANCY DRESS COMPETITION**

**THE OPENING PARADE** starts at the Leisure Centre at 12 Noon moving along Eigie Road to the School Playground

**THE FINAL OF THE GALA 5-A-SIDE FOOTBALL COMPETITION**  
to be played at the 5-a-side Pitches at 10.30am

**BE SURE TO GET YOUR RAFFLE TICKETS TO WIN SOME GREAT PRIZES**  
Including 2 Top Prizes Of £250!!!

**WHY NOT FINISH THE DAY AT THE BEACH PARTY DISCO AT THE WHITE HORSE INN?**  
**ENTRY FREE!!**  
(details from The Whitehorse Inn reception)

A BEAUTIFUL SECLUDED HEALTH SPA & SALON ON YOUR DOORSTEP!  
*Flawless treatments - flawless service - flawless experience..*

## *Flawless Beauty*

*Based on the outskirts of Aberdeen at Millden, near Balmedie, Flawless Beauty is situated within a secluded detached house which offers our clients a unique and private experience.*



A few miles away from the hustle and bustle of the city, our clients can relax and enjoy health and wellbeing in our exclusive beauty salon and health spa. We boast three treatment rooms, along with shower and changing facilities in the main part of the house, with a separate private suite which houses our large hydro pool, relaxation area and gym equipment. In addition we have a secluded decked garden area which can also be used for relaxation in warmer weather. Our health spa and tailored 'Escape' spa days are perfect for getting away from it all. We can cater for a maximum of ten and any parties of two or more booking a spa experience always have exclusive use of the facilities.



*We offer a superb service in a tranquil setting.*

*For more information, log onto [www.flawlessbeauty.be](http://www.flawlessbeauty.be) or contact Flawless Beauty on 07810 822501.*

**flawless beauty**

it's all about you!

## 1<sup>st</sup> Belhelvie Rainbows

1<sup>st</sup> Belhelvie Rainbows meet in Potterton Community Centre. Since our last article we have been busy having lots of fun. We celebrated Burns night by sampling some Scottish foods and learning to dance the Highland Fling. We made some yummy chocolate krispie cakes and we made some lovely Easter & Mothers Day crafts. All this in addition to our Rainbow games and songs.

We are also working towards our Roundabout the World badge. So far we have sampled different fruits and learned where the fruits were grown and considered how far they had travelled to get to Tesco and the impact on the environment and we also made some very colourful windmills. We have two more activities to complete before we get the badge. The Rainbows chose a Panda night and a Ladybird Activity we will do these this term.

This is a very special year for Girl Guiding as we are celebrating our 100<sup>th</sup> birthday! The Rainbows celebration was very special. We joined over 300 Rainbows for a Princess Party at Castle Forbes near Alford. The sun was shining and the Rainbows enjoyed visiting four adventure zones which included a horse & carriage ride, merry go round rides, 3 bouncy castles and a visit to a tent to be entertained by Allan's Magic. We then made tiaras and magic wands in anticipation of the "Grande Ball". Well, the Grande Ball was *awesome* as one Rainbow said!! We cut a very sparkly cake and danced all dressed in our Princess dresses. All the Rainbows left with a slice of cake and a goody bag. A great day was had by all.

The programme for Rainbows provides fun and challenging opportunities for five to seven year old girls. We have spaces available, for more info contact:  
**Pauline Wood    Tel: 01358 743002    email: [woodtroop@supanet.com](mailto:woodtroop@supanet.com)**

---

## 1<sup>st</sup> Belhelvie Rangers

The Rangers have had a busy few months. Our Centenary Camp took place at Haddo in May which proved to be a cold weekend but very enjoyable with a mixture of traditional camp activities and more modern ones such as Geocaching. Guides and Rangers were given the chance to speak to groups over the radio from across the world. Some of the Rangers who are also Young Leaders helped out at more Centenary Celebrations with the Rainbow's princess party getting much better weather than the camp. And of course exams have started at school so our meetings are taking a very relaxed theme at the moment with biscuits and chat featuring heavily! *(continued)*

We are looking for more members and for another leader. Any young woman aged 14 to 26 years can be a member and you don't need to have been in Guides before. We meet fortnightly on Wednesdays in Balmedie and the Rangers plan their own activities so it can be as adventurous or as relaxing as you want. We can also change the days we meet to suit how busy we are. To be a leader you need to be over 18 years old and be prepared to eat lots of biscuits. If anyone is interested, please give me a call or an email.

**Susan 01224 703335 [s.osbeck@physics.org](mailto:s.osbeck@physics.org)**

## **Potterton Playgroup and Two's group**

The children have been very busy at playgroup this last term.

They have grown their own plants from seed, had to look after the plants over the Easter holidays then on return planted their plants in the Playgroup garden. Most of the plants are doing well.

The children had a visit from a ranger and really enjoyed his talk about wildlife in this area. He showed the children where to put our new feeders for the birds and the birds have been feeding from them since.

On Wednesday 19 May, we had a trip to Satrosphere to see the exhibits on the 'Dinosaur Walk' and other science activities. The children thoroughly enjoyed the morning; seeing the dinosaurs, making their own dinosaurs, listening to a story, investigating the science activities and the play area.

Five of the children are leaving at the end of term as they are starting school in August. They have been attending the Rising 5s at playgroup and have enjoyed all the challenges. The children will have their own 'Graduation' at the end of June.

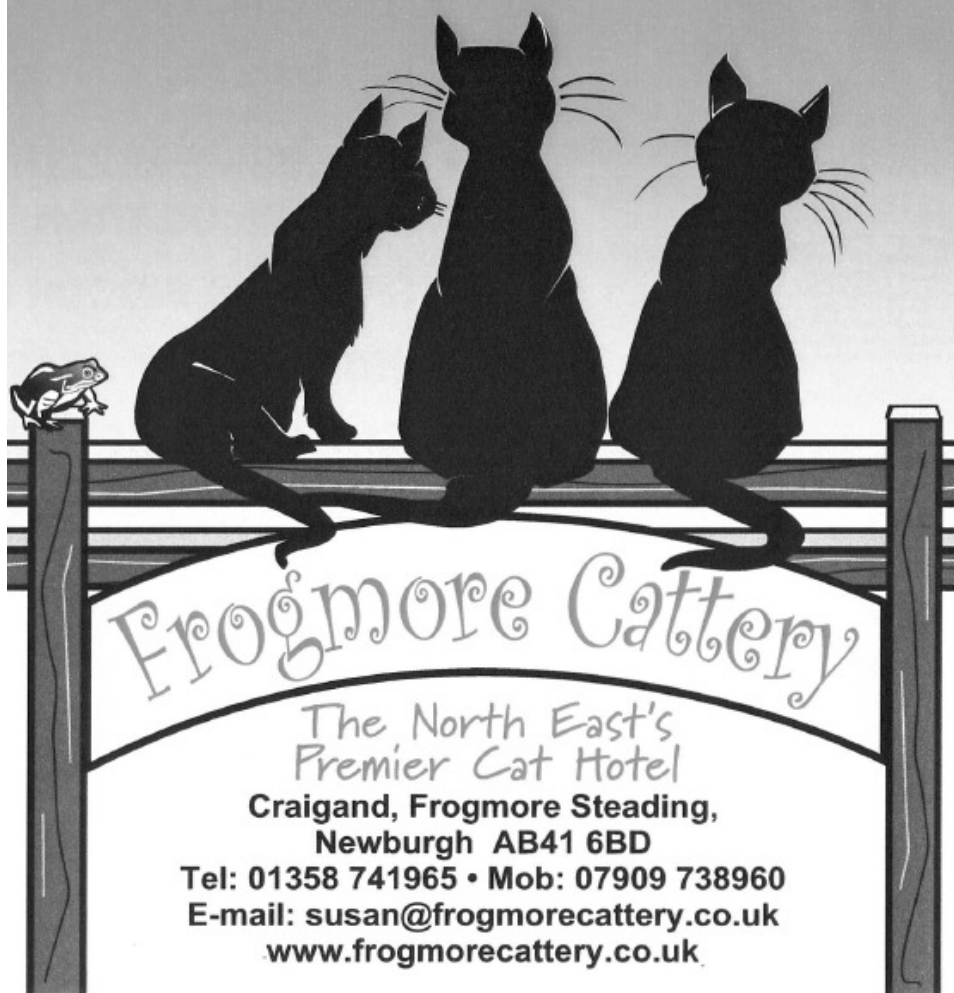
We have also been at the local parks and even had our own Bear Hunt. Luckily we did not see any bears in Potterton!

We will have Sports day in June and all the children really enjoy this activity. All are hoping to win some medals!

If any residents of Potterton have the Community Chest Tokens from the Evening paper and are not collecting them for any group, we are collecting and would very much appreciate them. Thank you.

Finally, a big thank you to all who came along to our fayre on the 8<sup>th</sup> May. We made a healthy amount of money for the children and this will help with new resources and the annual summer trip to Dizzy Rascals, Laurencekirk.

**To contact Potterton Playgroup or Two's group:  
Telephone 743335 weekdays**



- EXCLUSIVE MODERN ACCOMMODATION
- SPACIOUS INDOOR PENS
- INDIVIDUALLY HEATED BEDS
- EXCLUSIVE INDOOR PLAY AREA
- PEACEFUL COUNTRY SETTING
- COMPETITIVE RATES
- FRIENDLY AND CARING STAFF

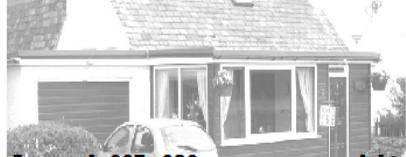
*For reservations please telephone:*

**T: 01358 741965**  
**M: 07909 738960**

**Susan Barrowman**

## Viewfield Guest House

3 star\*\*\* Bed and Breakfast



**From only £25 - £30 per person per night**

Panmure Gardens, Potterton, Aberdeenshire, AB23 8UG

**Tel 01358 - 742605**

Reservations and enquiries e-mail [info@viewfield1.f9.co.uk](mailto:info@viewfield1.f9.co.uk)

### Viewfield Guest House

Panmure Gardens,  
Potterton, Aberdeenshire  
Tel. 01358 742605  
email: [info@viewfield1.f9.co.uk](mailto:info@viewfield1.f9.co.uk)

# petpals

your best friends friend

**GOING ON HOLIDAY?  
OUT AT WORK?**

**Professional, friendly, flexible, fully  
insured pet care services.**

**House Sitting  
Home Boarding for Dogs  
Cat/Small Pet Visits  
Dog Walking**

**All animals incl. Horses, donkeys,  
farm animals**

**CALL Maureen on  
01358 723467  
[www.petpals.com](http://www.petpals.com)**

## Balmedie Fish and Chip Shop

Whitehorse Buildings

Open Times

4.30 - 10 pm Sunday to Thursday

4.30 - 11 pm Friday and Saturday

Traditional Fish and Chips, pies and  
puddings, Pizzas and Baked Potatoes

01358 742730



**I ♥  
Fish And  
Chips**



## PROMPT PLUMBING

Call

**Dave Williamson**



40 years experience of all  
types of PLUMBING WORK

All jobs from tap washers  
to tanks and showers

**01651 882291**

Daisy Cottage, Whiterashes.

## DIGITAL SWITCHOVER

TV is going digital all over the UK.  
The digital switchover affects  
any TV not connected to  
a satellite service.

### Stage 1 – 1<sup>st</sup> September

You will lose BBC2 if  
you haven't changed

### Stage 2 – 15<sup>th</sup> September

All remaining analogue channels  
will switch to digital. After both  
dates if you have Freeview,  
BT Vision or Top up TV  
you will need to retune your equipment.

### The Switch Over Help Scheme

Freefone 0800 40 85 900

Text phone users: 0800 40 85 936

Email: [info@helpscheme.co.uk](mailto:info@helpscheme.co.uk)

[www.helpscheme.co.uk/en/aboutswitchover](http://www.helpscheme.co.uk/en/aboutswitchover)

## As usual there are great bargains to be had at Parkhill Garden Centre



We have 71 varieties of **Seed Potatoes** in 3kg nets for only **£2.99**  
and a very good selection in **trial packs** at only **99p**

**Multipurpose compost** - 75 litre size only **£3.15**

**Growmore** - 25Kg only **£8.99** **Potato Fertiliser** - 3.4Kg only **£3.70**

### Watch 'em Grow young plants

First introduced last year this range of Seedlings and Plug Plants proved very popular. Our superb range gives you all the old favourites plus some of the newest and latest varieties - all to help you make your garden display, the most attractive in your area.

### Great value!!!

Fuchsias 7 cm pots only 60p ea. Trays of 15 or 24 plug plants from only **£1.80**

## Parkhill Nurseries & Garden Centre

Parkhill, Dyce, Aberdeen (On the B977 Dyce/Balmedie Road)

Open 7 days Tel: 01224 722167 Fax: 01224 722881

**Remember our packs of Spring bedding plants are only £2.60**

# BEAVERS CUBS SCOUTS EXPLORERS

Our Scout Group caters for youngsters all ages from 6 to 25.

What we do is best described in our policy which states:

The Scout Method provides an enjoyable scheme of progressive training, based on the Scout Promise and Law. This is best seen when young people:

- enjoy what they are doing;
- learn by doing;
- participate in varied & progressive activities;
- make choices for themselves;
- take responsibility for their own actions;
- work in groups;
- take increasing responsibility for others;
- take part in activities outdoors;
- share in prayer and worship;
- make and live out their promise.

**BEAVERS** – For 6&7 year olds & are very busy. The Wednesday night colony is very popular, supported by 4 Beaver leaders. They meet in Balmedie School at 6pm. Currently long waiting list. See below.

**CUBS** - Pack meets Tuesday night in Potterton Community Centre at 6:30pm.

Ours Cubs regularly get out and about. For youngsters aged from 8 to 10½.

**SCOUTS** – Our Scout Troop is for youngsters 10-14s. Meet Wednesday nights 7-9pm in Potterton and are always out and about.

**EXPLORERS** – Our 14-18 group meets in Potterton on Wednesdays from 7:00-9:30pm.

All our sections are for boys and girls alike.

Balmedie Scout Group is looking forward to the Family Camp at Haddo House at the end of June. We'll hear about it in the next edition.

## **HELP! HELP! HELP!**

We are the victims of our own success and are overly in demand both at Beavers and Cubs. In the short term the only way to clear the waiting lists is to form a 2<sup>nd</sup> Beaver Colony and a 2<sup>nd</sup> Cub Pack. Both would be needed and several new leaders would have to come forward before we could establish them. Additional lets would be needed too. There is no magic wand for this one.

If you would like more information about becoming an adult volunteer in Scouting and what the commitments are in becoming a leader, get in touch.

**To contact any of our sections call 01358 743156**  
**email [balmedie.scouts@btinternet.com](mailto:balmedie.scouts@btinternet.com)**

**Ian Thomson Group Scout Leader**

---

## **BALMEDIE CRAFT CLUB**

Balmedie Craft Club meets in Balmedie primary school on Thursday evenings from 6.15 – 7.15pm. It costs £1.50 per child per Thursday night. All boys and girls from primary one upwards are welcome to attend.

We participate in all sorts of craft – weather charts, ceramic tiles, cards, bracelets, coasters, spinning tops and mobiles to name a few of the projects we have covered. When it comes to special occasions eg Christmas, Valentine's Day, Mothers Day, and Easter we aim to do crafts that the children can take home and give as gifts.

We aim that the children should take home a craft every week. However sometimes if it is a bigger project it takes a couple of weeks.

If you want to try some new crafts come and join us!

**For more information Catherine Cassie 01358 743114**

# INDEX OF ADVERTISERS

<b>B&amp;B</b>	<b>Pg</b>	<b>Retail</b>	<b>Pg</b>
Chapelark B&B	12	Balmedie Chip Shop	44
Viewfield B&B	44	Barret &Coe Photography	17
		Diane Whyte Photography	8
<b>Education &amp;Leisure</b>		Pauline Wood Antiques	22
Jazzercise	26	Potterton Shop	10
		The Store	15
<b>Garages and Transport</b>		Whitehorse Inn	36
Cadgers Garage	3	Newmachar Business Ctr.	4
Cadgers Taxis	22		
Don Cabs	4		
Lawrence of Kemnay	24	<b>Services</b>	
Robeck	19	Ardo Classics	8
Victoria Garage	35	Pet Crematorium	12
		Ozone Cleaning	30
<b>Garden Services</b>		Servicemaster	28
Carle's Sheds	18		
Martin Stallard	26		
Parkhill Garden Centre	45	<b>Trades</b>	
		ABC Central Heating	32
<b>Health &amp; Beauty</b>		ABC Home Improvements	16
Balmedie Hair & Beauty	29	Balmedie Heat & Plumbing	2
Balmedie Pharmacy	10	D G Painter	18
Chiropodist – Leal	12	Graeme Isaac Joiner	19
Flawless Beauty	40	Nu Look Windows	26
Rowancott Herbs	8	Prompt Plumbing	45
		Reid Plumbing	6
<b>Pets &amp; their needs</b>			
Ardene House	34		
Frogmore Cattery	43	<b>Training</b>	
Lady & Tramp Grooming	13	Adept Driver Training	11
Petpals	44	Bikesmart	12, 30
Positive Paws	29	Newmachar Driving Sch	25

## QUICK CONTACTS:

<b>Emergencies -Fire, Police, Ambulance, Coastguard</b>	<b>999 or 112</b>
<b>Police – Non Emergency Calls</b>	<b>0845 600 5700</b>
<b>National Gas Emergency Service</b>	<b>0800 111 999</b>
<b>Scottish Water (Water Supplies and Emergencies)</b>	<b>0845 601 8855</b>
<b>Electricity</b>	<b>0800300 999</b>
<b>NHS 24 (Calls from 6pm to 8am)</b>	<b>08454 24 24 24</b>

<b>COUNCIL</b>	
Aberdeenshire (General Inquiries)	0845 608 1207
Cllr Gifford	01651 869493
Cllr Hendry	01358 743091
Cllr Johnston	01651 851198
Cllr Loveday	01651 872591
Balmedie Library	01358 742045
Eigie House	01358 743506
Community Centres - Bookings (Belhelvie and Potterton)	01358 727910
Balmedie Leisure Centre	01358 743725

<b>CHURCHES</b>	
Church of Scotland (Rev Paul McKeown)	01358 742227
Congregational Church (Rev Paul Jennings)	
Catholic Church (Parish Office)	01224 626359

<b>SCHOOLS</b>	
Bridge of Don Academy	01224 707583
Emergency Contact	0870 054 1999 PIN 011020
Balmedie Primary	01358 742474
Emergency Contact	0870 054 4999 PIN 021290
Ellon Academy	01358 720715
Emergency Contact	0870 054 4999 PIN 021040

<b>DOCTORS</b>	
Danestone Medical Practice	01224 833866
Ellon Group Practice	01358 720333
Oldmachar Medical Practice (Jesmond Drive and King St)	0845 337 0510
Scotstown Medical Practice	01224 702149
Udny Surgery	01651 842204

## Dates for your Diary

<b>June 2010</b>		
Sat 19	Balmedie Gala Balmedie School	12 - 4pm
Tues 22	Friendship Group Eigie House	2 – 4pm
<b>July 2010</b>		
Fri 2	End of school term Balmedie Primary, BoDA, Ellon Academy	
Sat 24	Scavenger Hunt Balmedie Beach	1.30-3pm
<b>August 2010</b>		
Mon 16	Community Council Potterton CEC	7.30pm
Wed 18	School Term begins Balmedie Primary, BoDA, Ellon Academy	
Tues 31	Friendship Group resumes Eigie House	2 – 4pm
Tues 31	Drug Proof Your Kids course starts Ellon Academy	7.30pm
<b>Future Dates</b>		
1 Sept	Digital Switchover stage 1	
4 Sept	Community Council Open Day Potterton	
15 Sept	Digital Switchover stage 2	
19 Sept	Beach watch Balmedie Beach Clean up From	10am

### DIGITAL SWITCHOVER

TV is going digital all over the UK. The digital switch over affects any TV not connected to a satellite service.

**Stage 1 – 1<sup>st</sup> September** If you haven't switched you will lose BBC2.

**Stage 2 – 15<sup>th</sup> September** All remaining analogue channels will switch to digital. After both dates if you have Freeview, BT Vision or Top up TV you will need to retune your equipment.

**The Switch Over Help Scheme**

**Freefone 0800 40 85 900 Text phone users: 0800 40 85 936**

Email: [info@helpscheme.co.uk](mailto:info@helpscheme.co.uk)

<http://www.helpscheme.co.uk/en/aboutswitchover>