

BELHELVIE BANTER

Balmedie : Whitecairns : Belhelvie : Potterton : Blackdog



EDITION 20

SEPTEMBER 2014

PARKHILL GARDEN CENTRE & SEASONS COFFEE SHOP

MOTHER EARTH MULTI PURPOSE COMPOST



70ltr bag for only £4.99

This is only one type of compost from the full range of **Clover Composts** now in stock.

Positive customer comments and our own experience confirm **Clover Composts** are by far the best, for seed sowing, pricking out, potting, hanging baskets & containers and many other compost job.

Winter Flowering Pansies now available.

Didn't they do well this last season!



Spring Flowering Bulbs now arriving.



Afternoon Tea Monday to Friday

2.30 to 4pm (last orders)

Only £12.00 for two "that's only £6.00 each"

Coffee Shop Tel 01224 724711 9am to 4.30pm

Garden Centre Tel 01224 722167 9am to 5pm

Parkhill, Dyce

www.parkhillgardencentre.com

Open 7 days On the B977 Dyce to Balmedie Road



EDITORIAL

Here we go with Edition 20 of our Community News. Belhelvie Banter started as a not for profit community publication 5 years ago with Edition 1 being distributed in December 2009 and our original advertisers trusting us to get the message out into the Parish.

This was just one of several “new” ventures to emerge from Community consultation. It was in July 2009 that Better Balmedie met for the first time and they have continued to bring pleasure to the residents with their unstinting hard work, monthly meeting and occasional outings. In November 2009 the Balmedie Christmas Lights Groups had their first fund raising event in the village. What fun has been had since on the Festive Parades, at the Christmas Lights switch on, at Santa’s visits and Christmas stalls and fairs, and now we will see the first permanent Christmas Tree installed in the parish and plans are on-going for more festive illuminations!

From the Banter editorial hot seat I have tried to encourage community involvement and keep you informed as to what is and has been going on around the parish. I will now vacate the seat knowing that we have established a credible and informative handy quarterly publication.

I look forward to seeing First Responders up and running a vital service in our parish and providing life saving defibrillators at key points around the area. I also ask that you take a moment and put your name to the Belhelvie Community Trust this is free - no membership fee. Registering as interested in seeing new ventures developing around the area is sufficient to give impetus to our applications for funding. I encourage you to keep your ear to the ground as there are many ideas in the pipeline. The Trust is a registered and a recognised community support body which will work in tandem with other established groups in the parish for the continued betterment of the area.

I should sign off by thanking Alan, Shuna for their support in compiling each edition and David for keeping check on the finances. Also our many distributors, especially Karen and more recently Rosie for help with co-ordinating distribution in Balmedie. We do need someone to take on the Sheils, Orrock, and part of Whitecairns distribution run. So volunteers please call 07814 254 301.

Audrey Jeffries, Editor

Photographs on this edition's cover...

- Tarts & Crafts Gruffalo Trail
- Beachside Coffee Shop at Balmedie Leisure Centre
- Stretch'n' Flex & Wrestling demonstrations at Balmedie Fete

Leigh Alexandra Soft Furnishings

Made to measure in your own fabric

- Curtains, Pelmets/valances
- Roman blinds
- Cushions, tiebacks etc
- Straight or bay tracks

Measure and fit service available.

For a free estimate or advice call
Leigh on 07979 965 908 or email:
info@leighalexandra-softfurnishings.co.uk
Newmachar Aberdeen



Web: www.leighalexandra-softfurnishings.co.uk
www.facebook.com/leighalexandra.softfurnishings



Elizabeth Ann Ross MCSP

appointments and enquiries:

tel: 01651 851812

mob: 0771 442 1244

email: physiotherapy@lineone.net

day and evening appointments
health insurance approved

treatment & rehabilitation for
neck/back/joint problems
muscle/ligament strains
sports injuries & arthritis
pilates 1-1 & classes

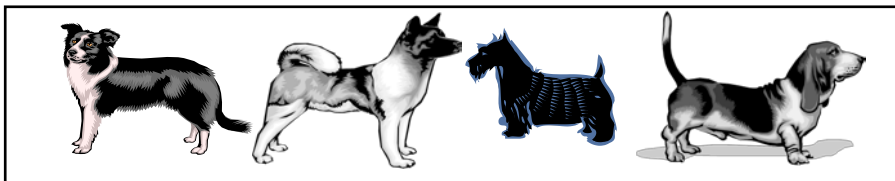
Office 5
Oldmeldrum Business Centre
Colpy Way, Oldmeldrum
AB51 0BZ

LADY & TRAMP

Learigg, Lower Rannieshill
Newmachar AB21 0UF

Your local grooming parlour

Ring Kirsty on 01651 869260



Where our dog grooming is individual to your dog.

20 years dog grooming experience.

Skilful grooming to certificated City & Guilds Standards.

Member of the Pet Care Trust, the British Dog Grooming Association and
the Federation of Small Businesses.

I ♥ TARTS

The Tarts and Crafts Café and Gallery is run for the community by the community.

Tarts and Crafts has been open almost ten years and has a fascinating history to celebrate! Tarts is having its unique story re-bound, so you are welcome to pop in for a hot cuppa and an absorbing read!

You must be proud! Tarts and Crafts is run solely by volunteers and has helped so many local community projects, charities and individuals throughout its lifetime.

Delicious! The café serves fresh and fair-trade produce, not to mention the 'affa fine' home-baking!

Always something new! Tarts aims to regularly change its craft exhibits so whether you are looking for some beautiful handmade jewellery, stunning photographic prints or shabby chic delights, the Tarts Gallery is an exciting craft space. Tarts and Crafts always welcomes new exhibitors and is working hard to host a variety of craft related events. So, whether you wish to exhibit or purchase, watch this space!

Perfect for a 'wee blether'. Tarts is looking to support more craft and hobby interest groups. If you would like to use Tarts & Crafts to host your own event or suggest a class/group you would be interested in attending, get in touch today. Tarts and Crafts is a lovely venue with a friendly relaxed ambience, perfect for all sorts of gatherings and groups.

Please 'Like' and 'Share' "Tarts and Crafts" using Facebook and have a look at the new website www.tartsandcrafts.co.uk which is under construction as more pages added.

Tarts and Crafts is an exciting small community-run venture, so everyone is WELCOME to get involved! All enquires please email info@tartsandcrafts.co.uk and a volunteer will reply to your email as soon as possible.

Tarts and Crafts Café and Gallery
Eigie Road
Balmedie
Aberdeenshire
AB23 8YF



Balmedie Pet Crematorium Ltd



Wardhead Croft, Balmedie,
Aberdeenshire, AB23 8YJ

Phone: 01358 742753, Mobile: 07818 408195

www.balmediepetcrematorium.co.uk

*At Balmedie Pet Crematorium,
we offer a dignified and private
cremation service for your pet.*

*Please call or visit our website
for further information*

Douglas Leal

Chiropodist / Podiatrist

Surgery: 72 Hutcheon Street
Aberdeen AB25 3TB

Treatments include:

Local Anaesthetics
Nail Surgery
Ingrown nails
Corns
Callus
Diabetic Care
Insoles for Fallen Arches

Telephone 01224 639379

or

01358 742620

HPC REG. CH17891

Home Visits Available



Wayne Combe Roofing

All roofing work under taken including pointing, flat roofs, leadwork, slating, tiling, gutters, pvc soffit and fascia and gutters, also roof cleaning and roughcasting. All work guaranteed.

Contact me on 07592 403051 for a free no obligation quotation!

1 Harris Drive, Aberdeen AB24 2TF waynecombe@btinternet.com

FIVE YEARS OF BETTER BALMEDIE:

As I write, the village is looking splendid and full of colour, with the flowers in our planters putting on their summer show. In August we celebrated our five-year anniversary of Better Balmedie, and in that time our efforts have significantly contributed to the look and feel of our community; it would seem a good moment to review what we have been working on and achieving in that five-year period. Although the list is not necessarily exhaustive, here is an overview of what we have done:

We have planted daffodil and crocus bulbs around the village - the cheery show of spring flowers considerably lifts the spirits after the long, dreich, dark winter months.

We have built, installed and maintained planters around the village. A new addition this year has been the memorial planter featuring the outline of a large red poppy, surrounded by sandbags, marking the 100th anniversary of the beginning of the Great War. Unfortunately, the poppy seeds we planted in various locations around the village have chosen not to show their heads (or at least, not yet...). However, one of our group members has had great success in their own front garden, with two planters packed full of red Flanders poppies, together with a cross, barbed wire and a soldier's helmet - a fitting memorial to those who gave their lives in that great conflict...

Some of our members took part in training in dry-stane dyking, and rebuilt the wall with a seat near the courts. Litter-picking events have been regularly organised, and in addition we have had a village orderly over the summer months, with the financial support via Belhelvie Community Council. We have obtained more litter bins for bus stops and the path to the beach. We have improved the provision of benches around the village; these have been well-used and appreciated by members of the community. We have liaised with Leisure Services of Aberdeenshire Council with regard to the creation of new paths to the beach area and the Magic Woods - these paths have now been created.

We obtained and cleared the site for our polytunnel and its surrounding garden area - a little haven of peace and tranquillity both for members and those visitors who regularly drop in. We obtained funding for the polytunnel and for the purchase of necessary equipment (mowers, shredder, water bowser etc). We grow flowers, vegetables and fruit inside the polytunnel and in land around it, for our own pleasure and learning, but most importantly to enhance the village. We have our team of grass-cutters who work on the communal areas not maintained by the Council and this makes a huge difference to the look of our planters. We have built composters, and a willow arbour.

We have worked with other organisations - The Conservation Volunteers, our local School, the Leisure Centre, the Christmas Lights Group, the Criminal Justice Team, the Brownies, Tarts and Crafts, Aberdeen Forward, Leith Hall, the White Horse Inn,

A1 Aquatics & Aberdeen Reptiles
61 Constitution Street Aberdeen AB24 5ET
Tel: 01224 626807



Stock includes:

Marine, Tropical, & Cold Water Fish

A full range of Snakes & Lizards

(captive bred reptiles)

Various species of Birds



In addition, we can also supply:

Fish tanks, full reptile set-ups,

food & accessories,

an assortment of birdcages,

seed, toys & gift vouchers

We provide a friendly & efficient service
and for your convenience we are open 7 days a week

Shop hours: Mon: 9.30 - 2.30 Tues - Thurs: 10.00 - 5.30
Fri - Sat: 10.00 - 5.00 Sun: 11.00 - 5.00



1st Class Footcare
one step ahead

Janine Henry BSc (Hons) MChS
Mobile Podiatrist/Chiroprapist

E: firstclassfootcare@hotmail.co.uk
M: 07586268049 HPC and State Registered

Photographs on this edition's cover...

- Tarts & Crafts Gruffalo Trail
- Beachside Coffee Shop at Balmedie Leisure Centre
- Stretch'n' Flex & Wrestling demonstrations at Balmedie Fete

Reminder...



The last date for submission
of text or adverts for the
Winter Edition is
Friday 31st October 2014

email:
belhelviebanter@live.co.uk

Landscape Services of Aberdeenshire Council; also the Co-op and the chip shop who displayed our collection tins.

We have had work experience youngsters working along with us and a Duke of Edinburgh scheme candidate. We have been fortunate in getting generous provision of plants and bulbs from Aberdeenshire Council and have had donations from Parkhill Garden Centre. We have obtained funding from Aberdeenshire Council via Belhelvie Community Council, but the overall bulk of our finance has come from the support and goodwill of local people at Plant Sales, Galas, Farmers' Markets, Church & School Fairs and other fund-raising initiatives. Two years ago our sponsored Calendar raised a considerable sum towards the creation of a community sensory garden, which will be taken forward by Belhelvie Community Trust.

Throughout all this, we have held monthly meetings and workshops with a wide range of speakers and have visited gardens and garden shows. Our monthly meetings resume in late September, taking place on the last Thursday evening of the month at 7.30p.m. in the Library. We have learned together, supported one another and had fun - we have lots of members and others who help when we ask them... Visitors are welcome and of course new members are always needed and much appreciated. We are open (at the polytunnel, behind the Leisure Centre) every Wednesday and Saturday morning (10 until 12), so feel free to drop in.

For more info. **www.betterbalmedie.org**

www.facebook.com/BetterBalmedie or contact **allan_jeffrey@ymail.com**

BOOKENDS

Our small friendly book group meets on the first Thursday of the month in the White Horse at 8p.m. We read a variety of books, and try to alternate more challenging titles with more light-weight ones to ring the changes. When at all possible, we try to source our books through the local library.

If you think this might appeal to you, contact Ailhlin on **ajc2804@gmail.com** or drop in to the White Horse at 8p.m. on the first Thursday of the month.

Dates of our meeting in Dates for your Diary (back page)

Kathleen Laming

New dance aerobic classes

FIRST CLASS FREE!!!

Classes held at Forsyth Hall,
Belhelvie

Mon & Wed evenings 8-9pm

Saturday mornings 9.00am

Burn up to 600 calories in one fun and powerfully effective 60-minute total body workout. Every Jazzercise class combines dance-based cardio with strength training and stretching to sculpt, tone and lengthen muscles for maximum fat burn.

For more information contact:

Claire Murray: 07824 552883

<http://www.jazzercise-uk.com/>

jazzercise
it shows

cardio



strength



stretch



jazzercise.com

*We deliver boxes of organic
fruit, mushrooms, eggs and
vegetables.*



BRIDGEFOOT ORGANIC VEGETABLES

For further information please contact:

Bridgefoot Organic

Co-op

Bridgefoot

Newmachar

AB21 7PE

01316188116

email: bridgefoot.organics@bopenworld.com

www.bridgefootorganics.co.uk

Soil Association registered since 1991.



Cadgers Garage

BELHELVE VILLAGE, ABERDEENSHIRE

**MOT
TESTING
STATION**

LOCAL PICK-UP & DELIVERY SERVICE AVAILABLE

Mon – Fri: 8am – 6pm

Saturday: 8am –

**MOT's •
REPAIRS •
SERVICING •
BODY REPAIRS •
PAINT SPRAYING •**



**Telephone:
(01358) 742284**



COMMUNITY EVENT

WESTERHATTON LANDFILL RESTORATION, POTTERTON, BALMEDIE

We are proposing to submit a planning application to restore our former Westerhatton (Potterton) landfill site which is just over a mile south west of Balmadie, six miles north of Aberdeen.

We are proposing to import suitable soils to Westerhatton for the sustainable long term restoration of the site.

There is no intention to reopen the site as a landfill - the existing building and infrastructure will be removed in order to ensure that an environmentally safe and visually acceptable landform is left for the public to access safely.

We will be holding a community event to explain the restoration plan in more detail and to seek comment on the proposal before we submit the planning application.

This event will give local residents the opportunity to **find out more** about the restoration scheme and **ask questions** of the project team.

If you cannot attend the meeting but want to find out more, please call **01244 303 400** or email **matthew.hayes@fccenvironment.co.uk**

Thursday
4 September

3PM – 8PM

White Horse Inn
23 Old Aberdeen Road
Balmadie
Aberdeen
AB23 8XR



Jesmond Joinery Ltd

kitchens/bedrooms/bathrooms
supplied and fitted/ceramic tiling

contact Bob Pirie



piriebob@btinternet.com

07775991196

01358 743299

Parkview Potterton

Aberdeen

AB238UY



**JOHN DUNCAN
PLANT HIRE**

Hill of Menie Balmedie
AB23 8YD



- **Manned Plant Hire**
- **Concrete Works**
- **Drainage**
- **Septic Tanks/Soakaways**
- **Slabbing etc**
- **Site Works/Topsoil**

Tel: 01358 742127

Mob: 07776 256000

E: jdplanthire@gmx.com

W: www.jdplanthire.co.uk



CHRISTMAS LIGHTS GROUP

The group is delighted to have taken delivery of a beautiful Spruce to serve as the planned living Christmas tree to be permanently sited just off Eigie Road. The tree is currently still potted and being watered and cared for by our friends at Better Balmedie. The group is grateful for the help provided by Rosie Nicol, Belhelvie Community Trust and Aberdeenshire Council's Landscape Services in making this possible.

Fundraising efforts have continued; it was good to see support for the group at our stall at the Leisure Centre Summer Fete - thanks to all who came along.

We will be continuing to raise money towards this year's village decorations; look out for our collection tins in local shops etc.

Please look for us on **Facebook** & follow our news online.

We are also happy to offer advice to other village settlement residents who might like to provide a similar decorated tree in their area. We know we can get the trees.....but you might feel inhibited and just need guidance on how to, how much, and what is required....*they have the knowledge (Ed.)!*

Elaine Holt

(and absolutely no connection with the above)

LOGS FOR SALE

50p and £1 per bag

At polytunnel, 10am to 12 noon

Wednesday and Saturday
mornings

Proceeds to Better Balmedie





Opening Hours:

Tues 9.30 - 8.00 • Wed 9.30 - 5.30 • Thurs 9.30 - 4.00
Fri 9.30 - 5.30 • Sat 9.00 - 2.30 (Closed Mon all day)

tel 01651 862066

26 Oldmeldrum Road • Newmachar • AB21 0PJ

- KEBELO Treatments
- Stockists of WELLA Matrix Products



MURCAR LINKS GOLF CLUB

*Join Murcar Links Golf Course & play one of the
finest links Championship Courses in Scotland*

- Fully stocked Pro Shop
- Lessons available from our Professional,
Gary Forbes - Tel: 01224 704370
- Superb Practice Facilities
- Catering available daily
- Individual & Corporate Memberships Available
- Visitors Welcome

Murcar, Bridge of Don, Aberdeen, AB23 8BD
Tel: 01224 704354 email: golf@murcarlinks.com
www.murcarlinks.com

GETTING INVOLVED

So far we are enjoying a pretty good summer, and if you like sport you are in hog's heaven with the World Cup, Commonwealth Games and locally the Scottish Open golf and then the Ryder Cup to look forward to! One of the good things about sport is that you can take part yourself, even if you will never hit a drive 400 yards like Rory McIlroy, or swim as fast as Hannah Miley, you can still take part and have fun. Hopefully all this sport will encourage greater participation and activity in everyone, as I keep saying, we seldom see active, fit patients in the surgery!

However there is another kind of participation that GPs will be looking for increasingly in the future and this is Patient Participation Groups, or PPGs. Some practices already have this up and running and some are in the process of setting one up. These groups will be increasingly important in the future for health planning and delivery (gosh I better watch my jargon or I'll end up as a manager!!), as the challenges ahead for the NHS will need us all to work together.

What is meant by a PPG? This is a fairly small group drawn from the patients registered with the practice, hopefully giving a reasonable cross section of the practice population. The group is usually chaired by the Practice Manager or a patient with experience in chairing a committee. The group meets regularly, usually quarterly, and with the Practice 3 to 4 times per year. This group is a forum to try and help improve aspects of patient care such as access, i.e. appointments etc, and to try and help establish priorities for the population.

Financial demands on a health budget are almost infinite and sadly resource is anything but, so the NHS does need to start a dialogue as to how best to use the resources we have. This is very much a small seed at present but PPGs have the potential to grow and help in this very important area in the future, not only for each practice but more widely for localities and health board areas as well.

The group needs to be small, no more than about 10 to 12 people, as experience in area where these have been running for some time has shown larger groups are not as effective. The group also needs to be aware of the "big picture", that is if you set up an evening surgery for working people, something we do at Scotstown, then you may need to have a surgery less

**Community Shop and Post Office –
Family owned for over fifty years
Friendly place to shop offering newspaper
deliveries and National Lottery**



Smith & Co
ABERDEEN, AB23 8UY

The Shop, Potterton
Tel 01358 742670

Dickies Pharmacy

Opening Hours

Monday-Friday: 9.00am – 5.30pm

Saturday: 9.00am – 12.30pm

Birch Way

Balmedie

AB23 8SJ

Tel No: 01358 741226



Services

- A prescription collection service from the following local surgeries:
Ellon Health Centre, Scotstown Medical Group, Danestone Medical Practice, Old Machar Medical Practice (Jesmond & King Street Practices)
- Disposal of Unwanted and Expired Medicines
- A NHS supported stop smoking programme
- Emergency Hormonal Contraception
- Minor Ailment Service
- Confidential advice and support
- Chronic Medication Services

**We also stock a wide range of Yankee Candles, Pilgrim jewellery,
Equilibrium jewellery, Terramundi Pots, perfumes,
Collection 2000 make-up and lots of other gifts for special occasions**

during the day to free up staff to run the evening surgery. Also providing one service in a surgery may mean another is not feasible, so the job is quite challenging. Do not be put off by this challenge, the potential to help improve health for your area is great!

PPGs are needed as health professionals need input from patients to make sure that what we think is needed IS what meets the population's need. The challenge of getting what we need and what we want can be a tricky balancing act though!

There are significant challenges ahead for Primary Care as we are being asked to do more and more outside of hospital and are increasingly busy with very elderly patients and people with many conditions. Having been a GP for over 20 years I see very great changes, but I realise that we must engage more with our patients to make sure we are giving the service that is needed. Sadly it is unlikely to mean that a large new surgery will appear in Balmedie or the surrounding area, but other ways of addressing more local access for basic Primary Care may arise in the future.

So I really hope that some of you will find the prospect of helping with the future of Primary Care an exciting challenge, and be inspired to get involved. I have found that Volunteering can be fun as I discovered doing sessions at the Commonwealth Games. I have met volunteers and athletes from around the UK and indeed the world. Being a tiny part of the Commonwealth Games has been great fun and really interesting, and I even got to hold a Gold Medal!

So you never know you may have an idea at your PPG which could revolutionise things, you never know if you don't get involved!!

Dr. A. Forbes



Daftneys Doggies

Dog walking, doggy daycare
and home boarding in Balmedie
and surrounding area.

Enquiries and further info:

Tel: 0756 429 7986

email:

daftneysdoggies@hotmail.co.uk



Jack & the Beanstalk

6th - 24th December 2014
Inverurie Town Hall

Call the Ticket Hotline
0845 527 8151

Book online at
www.inveruriepanto.com



A & C

Gardening
Landscaping
Car Valeting

Contact:

0787 038 9288

adr1apple@icloud.com

For that
Professional Service



Jack's Taxi
Private Hire
Menie

07928 904462

Contract Runs Welcome
Early Airport Runs Welcome

2nd BELHELVIE BROWNIES

2nd Belhelvie Brownies were lucky enough to be accepted to go to Perth with over 2000 other Brownies and Leaders last term. There were lots of fun activities including bouncy slides/bungee run, African drumming and Lego stand.

We also had a joint evening with 3rd Belhelvie Brownies at Haddo House where we roasted marshmallows and played games. We also went to Fyvie Guide House for a weekend. The theme for our holiday there was the film “Frozen” and we did lots of craft activities, baking, games, and had a bouncy obstacle course.



Next term we are having a fun day with lots of other Brownies at Inverurie to help celebrate 100 years of Brownies. We will also be working on our Brownie Programme and doing some badge work.

If you would be interested in joining our Brownie Unit we meet at Balmedie School on a Thursday evening from 6.15 pm to 7.45 pm please contact

**Marianne McIntosh 01358 724231 or
email: marianne.mcintosh@btinternet.com**

www.victoriagarage-belhelvie.co.uk



Victoria Garage

Used German Car Specialist

Suppliers of Nearly-new
and Quality Used Cars

Full Garage Services
Available

Local and Friendly
with the
Knowledge and
Experience to Help

Victoria Hall, Belhelvie, Aberdeenshire, AB23 8YR
Tel: 01358 743053 Mob: 07887 536987 www.victoriagarage-belhelvie.co.uk

BELHELVIE COMMUNITY TRUST (BCT)

The Belhelvie Community Trust has now been in existence for 8 months. It was set up to serve the parish of Belhelvie - Belhelvie, Potterton, Balmedie, Whitecairns and Blackdog and all other dwellings in between the villages. Its aim is to support existing projects, clubs and organisations and to develop new projects as identified by residents of the parish.

Although still very much in its infancy, BCT is starting to make headway with some projects:

Meetings are taking place with Aberdeenshire Council and NHS officials to identify and secure land for a Sensory Garden in Balmedie

Meetings are taking place with Council officials to identify uses for the former Rangers' hut in Balmedie Country Park

BCT helped Tarts and Crafts to secure a new lease from Aberdeenshire Council and are assisting with other grant applications in the Parish.

Working with Balmedie Christmas Lights, Balmedie Leisure Centre and Aberdeenshire Council Landscape Services, BCT obtained a living Christmas tree which will be planted outside Balmedie Leisure Centre with lighting powered from the Beachside Café. If you live elsewhere in Belhelvie Parish and would like to help install a living tree in your village, please get in touch.

BCT is now looking for members. By signing up as a member you don't have to do lots of work or attend lots of meetings - you will simply be confirming your support for the work that the Trust is doing. The BCT membership form can be accessed at: **belhelviecommunitytrust.wordpress.com**

If you have any ideas about ways of making improvements in our area, do get in touch. Little things can make a difference and can be best achieved by people working together.

Rosie Nicol

BELHELVIE COMMUNITY TRUST (BCT)

The Belhelvie Community Trust has now been in existence for 8 months. It was set up to serve the parish of Belhelvie - Belhelvie, Potterton, Balmedie, Whitecairns and Blackdog and all other dwellings in between the villages. Its aim is to support existing projects, clubs and organisations and to develop new projects as identified by residents of the parish.

Although still very much in its infancy, BCT is starting to make headway with some projects:

Meetings are taking place with Aberdeenshire Council and NHS officials to identify and secure land for a Sensory Garden in Balmedie

Meetings are taking place with Council officials to identify uses for the former Rangers' hut in Balmedie Country Park

BCT helped Tarts and Crafts to secure a new lease from Aberdeenshire Council and are assisting with other grant applications in the Parish.

Working with Balmedie Christmas Lights, Balmedie Leisure Centre and Aberdeenshire Council Landscape Services, BCT obtained a living Christmas tree which will be planted outside Balmedie Leisure Centre with lighting powered from the Beachside Café. If you live elsewhere in Belhelvie Parish and would like to help install a living tree in your village, please get in touch.

BCT is now looking for members. By signing up as a member you don't have to do lots of work or attend lots of meetings - you will simply be confirming your support for the work that the Trust is doing. The BCT membership form can be accessed at: **belhelviecommunitytrust.wordpress.com**

If you have any ideas about ways of making improvements in our area, do get in touch. Little things can make a difference and can be best achieved by people working together.

Rosie Nicol

BPH

Plumbing Heating &
Gas Services Ltd

A full range of plumbing heating and gas services...

- Qualified Gas Service Engineer
- Landlord Safety Certificates
- Magnaclean Power Flushing System
- Full Boiler Installation
- Bathroom Suites
- Kitchen Installations
- Extensions, Renovations
- All Jobbing and Maintenance

Jobs to do!

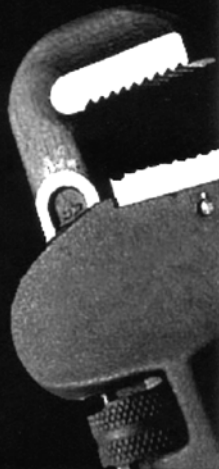
No job too small!

tel: 077177 46473

e: info@balmedieph.co.uk

w: www.balmedieph.co.uk

36 Pettens Close, Balmedie
Aberdeenshire AB23 8WZ



safe
REGISTER
304163



PARISH THREADS

Passing on the Baton.

On our way home from seeing the opening of The Kelpies, we stopped off to admire the new memorial at Bannockburn. A poem carved into the high curved oak beam is by Kathleen Jamie:

Here lies our land: every airt

Northern lights and siller tides,

Beneath swift clouds, glad glints of sun,

Small folk playing our part.

Belonging to none but itself.

'Come all ye', the country says

We are mere transients, who sing

You win me, who take me most to heart.

...

Its westlin' winds and fernie braes,

It's been quite a year for reflecting upon our country. Seven hundred years since Bannockburn, one hundred years since the First World War and 70 years since 'D' Day. It's also been a year for vicariously taking part in epic sporting events. From the Scottish Open down at the Aberdeen links, to Andy at Wimbledon. We had the Commonwealth Games in Glasgow, and we still have the Referendum to look forward to when there will be all to play for.

Here lies our land: every airt.

The Queen's baton travelled very close to our parish in June, on its way to Glasgow for the Games. Inside, it contained small pieces of blue granite from Ailsa Craig which were left as mementoes on it's journey through the 53 countries taking part.

Aberdeenshire has a little known connection to the First World War. Captain W.E. Johns wrote some of the 'Biggles' series here. He liked the area and rented a house for fishing and shooting trips. Those of us who remember those cheap hard-backed adventure books with the soft paper, know that they helped us learn about exotic foreign places, as well as the power of friendship and how to win a dog-fight. Of course our attitudes to ethnicity and the countries we now call the Commonwealth have changed since then but the character of Biggles is still with us through the power of recycling. Doctor Who's Captain Jack played by Glaswegian John Barrowman keeps the character of Biggles alive, albeit in a longer coat.

This summer the subject of grandchildren and my relationship with them has been on my mind. 'What do you remember of your grandparents?' I have asked people. 'Did you or do you know them, spend time with them, hear things about past

relatives, learn old fashioned things from them you never thought you'd need?' 'Did you appreciate them or wish you'd known them better?'

I have also been considering how much grandchildren need their grandparents as a base for their own emotional future. It's when we become grandparents that we benefit from those memories of our own grandparents. They help to place us in context with our family. They enfold us into the fabric of ourselves.

We are mere transients who sing

Perhaps due to distance I have a romantic notion of being a Grandparent. The little boys in America call us 'Grandma and Grandpa Faraway', for obvious reasons. One day recently we watched a video of them on 'you tube' showing us how to build a Lego model. It was a 'light bulb' moment for me as I realised that they weren't tiny any more and if we are to have more than a fleeting holiday relationship with them we need to get on with it.

Small folk playing our part

If I were to see them more often, I could tell them about their great-great grandfather whom I knew well until I was thirty. He learned to design ships in Glasgow. He fought at the Somme, survived and lived 'til he was 90. I can remember how his false teeth squeaked when he chewed... Or their country great-great grandmother an expert goose plucker and baker. I can remember watching her take the hot iron from the open range and spit on it to check the heat.

Seeing more of the grandchildren will be a challenge logistically but for the summer months in the next few years, Kalamazoo, Michigan is where I intend to be, allowing two small memory banks to top up with Grandparent-ness, which will include the reading of old fashioned 20th Century adventure stories.

As for the challenge, I shall try to remember Biggles' advice when his men were facing a problem: "If you can fly a Sopwith Camel you can fly anything".

'Come all ye' the country (or parish or family) **says,**

You win me who takes me most to heart.

Yours Aye,

Mary Cane



SUNDAY CARVERY

ONLY

£9.95

AVAILABLE ALL DAY

THE WHITE HORSE, BALMEDIE, ABERDEEN : 01253 741404

01253 741404

www.whitehorse.co.uk

[/whitehorse1947](https://www.facebook.com/whitehorse1947)

[@whitehorse1947](https://www.instagram.com/whitehorse1947)

Newmachar Tree Surgery



Newmachar Tree Surgery gets the job done!

You name it and we can provide it. With experienced staff working around the clock, you can be sure we will get the job done and get it done right. Newmachar Tree Surgery are a fully insured, Aberdeenshire based company with a safe and professional approach to all aspects of tree pruning, tree felling and hedge cutting work in the Grampian area.

Mob: 07721 551055 Tel: 01651 863404

Tree Felling | Grass Cutting | Hedge Trimming | Fencing & Decking



www.newmachartreesurgery.co.uk



TheStore
our farm, our passion - your lifestyle

FRESH & HOME GROWN

direct from our family farm

• ABERDEEN ANGUS BEEF • HOMEBRED LAMB • LOCALLY SOURCED VEG • SCOTTISH DELI PRODUCTS • GOURMET HAMPERS • CHEF PREPARED MEALS WE CAN DELIVER TO YOUR DOOR IN THE ABERDEENSHIRE AREA • DELICIOUS HOMEMADE LUNCHES • HEALTHY READY MEALS

VISIT OUR FARM & COFFEE SHOP. OPEN 7 DAYS.

Westfield, Foveran, Aberdeenshire AB41 6AY Tel: 01358 788 083

www.thestorecompany.co.uk

Follow us or become a fan  



BOB DEANS

Quality Painter & Decorator

Interior & Exterior

Private and Commercial

Competitive Rates – No VAT

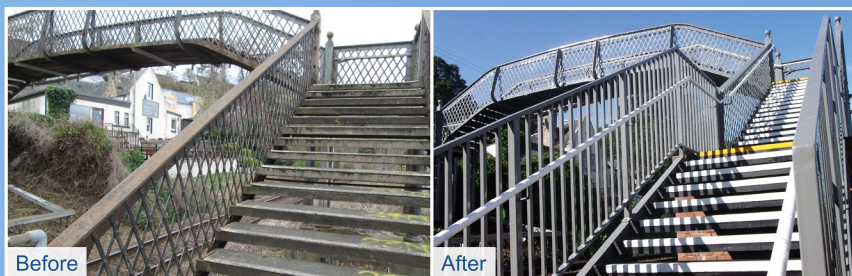
For a prompt and reliable service

Tel: 01224 692577

Mobile: 07901 696980

email: Bobdeans618@btinternet.com

From concept to completion



Survey • Design • Manufacture • Installation



MSD Design Ltd refurbishment
of Clachnaharry Bridge, Inverness

www.msddesignltd.com Tel: +44 (0) 1224 897238 Fax: +44 (0) 1224 898037

MSD Design Ltd, Unit 1, Logman Centre, Greenbank Crescent, Aberdeen, AB12 3BG



Children's Nursery, Newmachar
01651 869078
kelly@flowerpotschildcare.com
www.flowerpotschildcare.com

POTTERTON SERVICE STATION

CAR & VAN SERVICING

BRAKES • EXHAUSTS • TYRES
MOT Prep • MOTs Arranged
WELDING • Etc • Etc

TIME SERVED MECHANIC

**WE DON'T FIT PARTS YOUR
CAR DOESN'T NEED !**

Tel/txt: 0771 104 1472
ANYTIME

GOUGH DECORATOR **PAINTING AND DECORATING**



Domestic & Commercial

Quality & Competitive Work

Experienced Working at Height

Free Quotations & Free Advice

Interior & Exterior Painting

Wallpaper Hanging

Phone Douglas on

07975512456

Or look at the web site

www.goughdecorators.co.uk

BALMEDIE FRIENDSHIP GROUP

This group is open to all residents over the age of 50 who reside in the parish of Belhelvie. We meet every second Tuesday in the lounge of Eyrie House lounge from 2-4 pm and have an interesting mix of musical entertainment and talks. There is a small charge to cover refreshments and a raffle. New members are always welcome.

Our first meeting after our summer break is on Tuesday 26th August when we will have Bingo. There after the programme to Christmas is:

9 September	Entertainment by 'Sounds Familiar'
23 September	Entertainment by Bill and Moira 'The 2-Sum'
7 October	Mhairi Shand Entertains
21 October	Talk by Ian Bell on "The Tapestry of Scotland"
4 November	Cruden Singers
18 November	Talk and slideshow by William Johnston 'In my Father's Footsteps'
	Visit to World War I Battlefields and Cemeteries
2 December	Inverurie Rotary Glee Club
16 December	Christmas Party

For any further information please contact: **Margaret Murison**

Secretary 01358 742285 or

Mr Vic Deans, President 01358 743634



ARDENE HOUSE

VETERINARY PRACTICE

PROVIDING FIRST RATE MEDICAL CARE FOR ALL YOUR PETS

- VET & NURSE ON SITE 24/7 FOR EMERGENCIES & ADVICE
- ROUTINE MEDICAL CARE AND VACCINATIONS
- ULTRASOUND SCANNING, DIGITAL X-RAYS, ENDOSCOPY
- VISITING SPECIALISTS IN CARDIOLOGY, OPHTHALMOLOGY, INTERNAL MEDICINE, SOFT TISSUE SURGERY, DERMATOLOGY & BEHAVIOURIST

Veterinary Surgery & Hospital
Skene Road, Kingswells
Aberdeen Tel: 01224 740700

Veterinary Surgery
Jesmond Drive, Bridge of Don
Aberdeen Tel: 01224 826121

AMPLE FREE PARKING AT BOTH SURGERIES

Balmedie Fish and Chip Shop

Whitehorse Buildings

Open Times

4.30 - 10 pm Sunday to Thursday

4.30 - 11 pm Friday and Saturday

Traditional Fish and Chips, pies and puddings, Pizzas and Baked Potatoes

01358 742730



BELHELVIE CHURCH UPDATE

June this year marked the first anniversary of "Coffee Haven" and by all accounts it is a great success for all involved. The best recommendation is to give it a try on the 1st Tuesday of the month from 10.00am until 12 noon in the Forsyth Hall.

Tea, coffee and a delicious choice of home bakes are on offer and in the warm and welcoming atmosphere there is plenty of time to chat to friends or make new ones.

COFFEE HAVEN is staffed by volunteers, and the purpose of providing this service is to have a venue where people of all ages and stages can come and meet other folk in comfort without having to travel any great lengths. Easy parking in the Forsyth Hall car park is an added benefit.

There is no charge for the refreshments as they want to offer this space as a service to the community, but donations are always more than welcome!

The Pastoral Care team also run a Golden Zumba class every Monday in the Forsyth Hall 9:45-10:30 followed by coffee and chat - £2:50

Belhelvie Church Social Committee are holding a Fashion Show on Thursday 9th October at 7.30pm in Forsyth Hall. Catwalkers and J&K Shoes. Tickets £8 (incl glass of wine and shortbread)

also A Christmas Coffee Morning on Saturday 22nd November 10am to noon in the Forsyth Hall. **Ed.**

BALMEDIE LIBRARY

OPENING TIMES

MONDAY	2.30 – 4.30 5.30 – 7.30	THURSDAY	10.00 – 1.00
TUESDAY	Closed	FRIDAY	Closed
WEDNESDAY	2.30 – 4.30 5.30 – 7.30	SATURDAY	10.00 – 1.00

The first Thursday of each month (term time only), there is a Rhymetime session for under-fives from 11.30 – 12.30 come along and join in the fun.

We also have a very friendly Knit & Natter Group every Thursday 10.30 – 12.30 so if you like knitting come along and join us and have a cup of tea/coffee and natter.

Eigie Road, Balmedie, AB23 8YF

Tel: 01358 742045



Peace Lily Therapies

Professional mobile reflexology service in Balmedie

Reflexology aids relaxation, improves mood, aids sleep, relieves tension and improves sense of well-being



Enjoy a relaxing holistic treatment in the comfort of your own home. Treatments last approx. 1 hour, prices start from £25.00



ASSOCIATION of
REFLEXOLOGISTS

Melanie Wharton BSc (Hons) MAR

07896 752363

melanie@peacelilytherapies.co.uk www.peacelilytherapies.co.uk

Mark's

Mobile Valeting

Fully Insured Professional Valeting Service

www.marksmobilevaleting.com

07921 084 365

BELHELVIE NEIGHBOURHOOD WATCH

A quiet few months for The Belhelvie Neighbourhood Watch. Which is obviously good news!!

I did have a phone call from a lady in Balmedie who had had her car written on. I don't know the full details, but just a reminder....if you do suffer a criminal act, please dial 999 if it's an actual event occurring at the time or 101 for the non-emergency line. I'm afraid I can't help in those matters.

I'd still love to hear from people wishing to join the Belhelvie scheme.

You can join at **www.neighbourhoodwatchscotland.co.uk**

Once you have signed up there, please remember to search for the Belhelvie scheme and click to join us.

If anybody needs a Neighbourhood Watch sticker, please let me know.

I'll aim to place a poster on the BCC notice boards, but if you wish to contact me, you can call/text my mobile 07825 216 233.

Please remember to keep cars/sheds/outhouses/garages locked when not in use....and check your doors are all secure before heading to bed!!
You'd be amazed how many aren't.....

Paul Collier



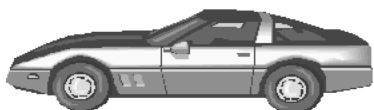
GRM Motors

*Servicing • All car repairs
MOT Preparation • Tyres
Diagnostics*

All Makes & Models

**Tel: 07983 978134 or
01358 742111**

North Beach Way
(Old Mushroom Farm)
BALMEDIE AB23 8WU



Pauline Wood Antiques and Collectables

Shop Now Open
Specialising in
Grandfather Clocks and
Quality Furniture
Antiques Bought & Sold

Open 7 days
Tel: 01358 743002
Jalna, Manse Road
Potterton, AB23 8UB
email: pwac@supanet.com

Balmedie Hair and Beauty

Unit 1 Whitehorse Buildings, Balmedie, 01358 742888

A full range of hair & beauty treatments including



*Colour treatments
Racoon hair extensions
Weft extensions
Acrylic / Gel nail extensions
Waxing
Bio-gel overlays
Eyelash extensions
St Tropez spray tanning*

SCOUTS



Balmedie Scouts were making good use of their shiny new trailer at a recent Family Camp attended by over 140 parents and children.

A representative from the Co-operative, who donated over £1500 towards the trailer, was on hand to see it in action for the first time. Other sponsors were The Scottish Scout Development Fund, Mary Salmond Trust, BT and N.E.Scout Region.

Balmedie Group Scout Leader Ian Thomson (Mr T) said "We are delighted that so many organisations got behind our fund-raising efforts. A trailer such as this is a great asset to our group and will benefit our members for years to come. It replaces a second hand one we used for 20 years! It makes our lives as leaders so much easier logistically." He went on to appeal to readers "We are looking for use of a secure garage or lock-up locally to store the trailer. Anyone who thinks they can assist should contact me on **01358 743156**.

"We would also like to take this opportunity to thank the Banter for a donation to buy new tents for the camp."

Ian Thomson



MICHAEL DUNCAN

BUILDING AND SLATING CONTRACTOR

EST. OVER 25 YEARS

- *All Slabbing and Lockblock Undertaken*
- *Garden Walls Built and Harled*
- *Patios and Paths Laid*
- *Steps Built*
- *All Drainage and Siteworks Carried Out*
- *Subcontractors Provided*
- *Forklift and Scaffolding Hire*
- *Building Materials Supplied and Delivered*

Why not phone for a FREE quotation today?

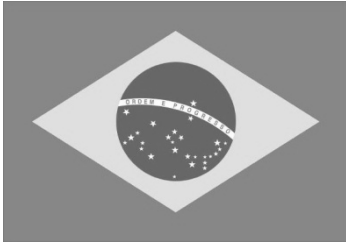
West Pitmillan Business Centre, Foveran, Ellon,
Aberdeenshire AB41 6AL

Tel: (01358) 789562 • Fax: (01358) 789106

Mob: (Mike) 07710 903535 • (Keith) 07810 212503

E-mail: mike@michael-duncan.co.uk

BALMEDIE SCOUT FAMILY CAMP



Yet again Mr T (aka Ian Thomson) ‘fixed the weather’ for the bi-annual Balmedie Scout Family Camp at Haddo in late May.

This year the theme was Brazil – nothing to do with football!

One hundred and twenty five children and adults of the Brazilian tribes; Al Kana, Bare, Cinta Larga, Deni and Enawene Nawe spent a weekend in the Haddo Jungle. During this time they honed their tribal hunting skills at archery, cooked over a fire and ate jungle cuisine. They made their own shelters out of vegetation or whatever they could find (some people wanted to sleep out in them), rode the rapids of the big Haddo hill and tackled the obstacle courses of the jungle forests.

On the Friday evening all the tribes brushed up their mass tribal chants at the new campfire circle which Aberdeenshire Council has recently created.

Over the winter it is not only the campfire circle which Aberdeenshire Council has relocated and improved but also the toilet blocks have had a most welcome make-over.

Shuna Jenkins

SWRI

The meetings take place on the 2nd Wednesday of the month starting on Sept 10th for the rest of the year. All will be made very welcome.

The Whist Drives commence on the 4th Wednesday of the month, starting on 24th September - all are held in the lounge of Eigie House Balmedie.

Elaine Strachan

Need a service, MOT... Too busy...

Call Lawrence of Kemnay - Balmedie

Free Collection
& Delivery Service
at your convenience
within a 20 mile
radius

Lawrence of Kemnay -
Balmedie Service Station
7 miles

We service all
makes & models
without invalidating
your warranty



Old Aberdeen Road ■ Balmedie ■ 01358 743470
Roundabout ■ Inverurie ■ 01467 629926

For further details and to view over 200 used cars click onto:

Address



*We always welcome features, items of news, poems
and stories, events information and anything which
you think other 'Banter' readers may find interesting.
Please submit material to:
belhelviebanter@live.co.uk*

Thank you, Editor



BALMEDIE LEISURE CENTRE

I am absolutely delighted to confirm that the Beachside Coffee Shop is now officially open; this is a fantastic addition to the Leisure Centre and already proving to be very popular. The name by the way is thanks to three year old Kiera Macdonald who won the Name the Coffee Shop Competition. I hope Kiera and her family enjoyed the prize.

For everyone associated with the Leisure Centre, this is a moment of celebration, pride and satisfaction on a job well done. A lot of time and effort has gone into this venture Phase 2 of an ambitious expansion programme to secure the future of our community Leisure Centre.

We have had some fantastic support especially from Aberdeenshire Council, local businesses, customers and the wider community. Thank you all.

Personally I would like to thank and recognise the fantastic work staff and my colleagues on the committee have put in. Especially our manager Shona Buchan, who really is the rock our Leisure Centre stands on.

Thanks must also go to Tracy Wilson our Coffee Shop Manager who has put together a really excellent team, and a terrific Menu. Of course I can't forget my better half Jackie, who has had to put up with my moans, groans and little tantrums.

We at Balmedie Leisure Centre look forward to giving you a warm welcome. We want you to be part of the family, and our friendly staff is always on hand to help with your query, no matter what the nature. If you are interested in getting fit for a career or you just want to lose a few pounds, then our 'Fitness For All' approach can help you. Our coaches/instructors will motivate and encourage you to achieve your goals. Our classes will give you a sense of achievement; they will be fun and flexible to suit you. Then why not relax with a coffee and enjoy a sandwich or fine 'piece' purchased from our Coffee Shop.

If you wish to take part in one of our fitness classes or enjoy the benefits of some individual personal training, or maybe you just want to do something different then give us a call or better still pop in to discuss your requirements. **Bill Murray**

Voluntary Committee Chairman.

PROMPT PLUMBING



Call

Dave Williamson

**40+years experience
of all types of**

Plumbing Work

Emergency Call-outs

**All jobs from tap washers
to tanks and showers**

07810 477940

01651 882291

Daisy Cottage, Whiterashes.

Cadgers Taxis

And Minibus Hire

**4/8/16 Seater cars/Minibuses
People Carrier, Contracts, School runs**



**3 Scott Terrace,
Belhelvie AB23 8YT**

01358-742370

positivepaws
puppy school



Invitation to puppy owners

Have fun socialising and training your puppy using kind, effective, modern methods in a relaxed, family-friendly environment

Small classes for individual attention with a qualified instructor

CLASSES HELD AT WHITERASHES HALL

Puppies accepted from completion of vaccination course.

One-to-One training also available

For further details contact:

Billie Machell DipCABT, MAPDT 00748

Tel: 01651 862310

www.positive-paws.com





Butcher Shop

*Three Generations of Butchery
Tradition & Heritage*

*** Summer BBQ Packs**

*** Weekly Specials**

Beef, Lamb, Pork, Game, Sausages, Bacon & much more

Shop Hours: Mon – Thurs 8am – 4pm

Fri 8am – 5pm and Sat 8am – 2pm

Unit 3, Broomiesburn Road

Ellon, AB41 9RD

Tel: 01358 727857

“Where Customer Quality & Service Comes First”

CARLE'S SHEDS

"Another Quality Shed"

*For a wide range of Garden
Sheds, Summer Houses,
Garages, Kennels, Loose Boxes
and Field Shelters*

Tel: 01224 722445

Mob: 07717 312626

raymond.barclay@btconnect.com

www.carlessheds.co.uk

Mosshill Croft, WHITECAIRNS,
AB23 8XA



IAN'S ROOFING

(23 years local experience)
LOW PRICES and
GREAT CUSTOMER SERVICE
FREE estimates for
REPAIRS • RENEWALS
GUTTERING • DOWN PIPES
SLATING • TILING • RIDGING
FLAT FELT ROOFS
MORTAR • POINTING

Tel Ian: 01224 896851
Mob: 07855 970583

ROBERT LAMB

Architectural Services Ltd.



COMPLETE DESIGN SERVICE
FROM PLANNING THROUGH TO COMPLETION

FREE INITIAL CONSULTATION & QUOTATION
ALL TYPES OF DOMESTIC & COMMERCIAL WORK
HOUSE ALTERATIONS & EXTENSIONS
REPLACEMENT WINDOWS, FRENCH DOORS & PATIO DOORS
DORMER WINDOWS & LOFT CONVERSIONS
DOMESTIC GARAGES
STEADING & LISTED BUILDING CONVERSIONS

BURNSIDE STEADING. 24 SMALL HOLDINGS.
BALMEDIE. ABERDEEN. AB23 8WU.
TEL/FAX: 01358 742771 MOB: 07766 106279
E-Mail: robert.lamb6@btopenworld.com

BELHELVIE COMMUNITY COUNCIL

Residents in the Potterton area may remember, a while back now, we held a meeting in Potterton Community Centre to consult on what people would like to see in their village. It has taken rather longer than we would have liked but the project has not been forgotten!

We now wish to press ahead and get some things moving, but we need to consult you again, in particular as there were many requests for activities at the community centre, and we need to find out exactly what people are looking for, and also to check what is or is not possible under current Council funding constraints - we will have Council Officers on hand to advise on these.

So we are planning a public meeting at **Potterton Community Centre** on **Saturday 11th October**.

We hope as many people as possible will call in to talk to us.

BLACKDOG

Blackdog electric substation planning application has been recommended for approval by Aberdeenshire Council Planning Service. The application was debated at length by Formartine Area Committee and as a result a vote was taken to refuse the application by 11 votes to 1 due to health and safety concerns for the residents of Blackdog.

Many letters of objection were received by the Planning Service from residents of Blackdog. However, the applicants appealed the Formartine Area Committee decision and a Scottish Government Reporter reviewed the decision **and granted the appeal**. Therefore the planning application for the Electric Substation was granted.

Residents of Blackdog are extremely disappointed that this has happened, as it appears that the Scottish Government Reporter has ignored the letters of objection from residents of Blackdog and also the decision taken by way of a large majority vote to refuse the application.

As you will note there is no 3rd party right of appeal and the only way forward would be to take this application to Judicial Review at the Court of Session.

David Watson, BCC Secretary

RJG Property Maintenance Ltd

FOR ALL YOUR PROPERTY REQUIREMENTS

Book your outsides now to avoid disappointment



Ames Taping * Painting & Decorating * Timber & Joinery * Masonry & Paving * Gutter & Patio Jetting * Insurance Work Undertaken

We also fit bird deterrents now

Tel 07827 276 710

www.rjgmaintenance.co.uk

**PC Crashing or Freezing, Boot Problems •
Blue Screens or Windows Errors
Hardware Repairs & Upgrades • Virus Removal
Wireless Wi-Fi/Internet Problems
• Data Loss & Recovery • Printer Problems
Free collection & drop-off, home visits
or you can bring your system to us**

Aberdeenshire Laptop Repairs **Computer Repairs & Upgrades**

Based in Balmedie, we provide a complete range of computer repair services within the Aberdeenshire area

Tel: 01358 742647 or 07577 362677

email: repairs@aberdeenshirelaptoprepairs.co.uk

web: aberdeenshirelaptoprepairs.co.uk

Need Pet Help???

Call Jayne...

ANIMAL NANNY

**Registered Dog Walker
& Cat Sitter**

**Member of NARPS
Established 2004**

Please call 01358 742252

or

07774 728940

**5 Kirkhill Way
Potterton
AB23 8ZB**



THE NAIL & BEAUTY ACADEMY

We specialize in fully accredited Nail & Beauty Courses from complete beginners to those looking to further their career.

Courses we offer...

- 4 Day Beginner Acrylic & Gel Nail Extensions
- Manicure (including gel polish)
- Acrylic & Gel Conversion
- Eyelash Extensions
- Beginner & Advanced Waxing
- Spray Tanning
- Make-Up

**Why not pop in for a chat upstairs
about booking your course today!**

Open: Mon - Fri 10-4pm

tel: 01224 467463

email: thenailandbeautyacademy@live.co.uk

web: www.thenailandbeautyacademyabdn.co.uk



K.F. Watson Electrical

Commercial - Industrial - Domestic



"JOBGING A SPECIALITY"

Outside sockets & security lights
Extra sockets & telephone points

Loft lights & power to sheds

Oven/cooker repairs

Down lights

Replacement trip style fuse boxes

Mains wired smoke detectors

Electric showers

Extract fan installations

Electric under floor heating

Fixed Wiring/Periodic Inspections

SELECT

Building Standards
Approved Certifier



Ellon: 01358 789739

Aberdeen: 01224 566450

www.kfwatsonselectrical.co.uk

**Free Estimates
& Advice**

**All Electrical Work Undertaken
Our Prices won't SHOCK you**

**From a Socket
to a Rewire**

REID PLUMBING & HEATING SERVICES LTD.

Reid Plumbing & Heating Services is a family run company which was founded over 28 years ago. We pride ourselves in delivering exceptional quality to all customers both residential and commercial. We specialise in:-

Bathrooms

- Full design service
- New installations
- Refurbishment of existing
- Forming WC facilities in cupboards
- Towel rails

Tiling

- Wall tiles
- Floor tiles
- Under tile heating
- Re-grouting existing tiling

Central Heating

- Full design service
- New installations
- Boiler changes
- Upgrade of existing systems
- Designer radiators
- Boiler services
- Landlord Gas Safety certificates

Kitchens

- Full design service
- New installations
- Refurbishment of existing
- Granite worktops
- Installation of gas appliances
- Cooker hoods

Gas Fires

- New installations
- Upgrade/replacement of existing
- Servicing/gas safety checks

Traditional Plumbing

- Lead work
- Cast iron gutters & downpipes
- Outside garden taps

If you wish to discuss any element of work we undertake, please do not hesitate to get in contact with George Reid.

Reid Plumbing & Heating Services Ltd.



**Arborley
North Beach Road
Balmedie**

01358 742339



***A warm welcome awaits
you at Mary and Hebbie
Watson's Homestead,
Whitecairns on Friday
26th September 2014***

This is the 15th year that residents in the parish have circled the date on the kitchen calendar and from 10:00am until late have drive along to Homestead for tea/coffee and homebakes. Last year Mary and her helpers raised over £1700, now that's a fair few cuppas. There will be one in the pot for you this year!!

OLD BELHELVIE AND NEWBURGH BOOK

I have been asked by Stenlake Publishing to produce a book based on old images of the Belhelvie and Foveran areas, including Balmedie, Belhelvie, Potterton, Blackdog, Whitecairns, Menie, Foveran and Newburgh. The text will be based on old photographs, postcards and ephemera from the 1800s through to 1970s. I am now on the lookout for any material which could be included in the book. In addition to any local images, your anecdotes about the area would be particularly good, as it is often the real-life memories of local people which help to bring text to life.

If you can help in any way, or would like to have a chat about the book do please get in touch.

I look forward to hearing from you **Rosie Nicol 01358 742557 or
rosienicol28@gmail.com**



Comprehensive Dental Care for the entire family under the **NHS**

Childsmile Practice

Kingseat Dental Care
Unit 1, Kingseat Business Park
Kingseat Avenue
Newmachar AB21 0AZ

01651 260200
info@kingseatdentalcare.co.uk
www.kingseatdentalcare.co.uk



NOW ACCEPTING NEW PATIENTS

**Only 10 minutes drive
from Dyce and
Bridge of Don**

Purpose built, new
and modern dental practice

Wheelchair accessible
throughout

Opening Hours:

Monday - 08.30 to 18.00

Tuesday - 08.30 to 18.00

Wednesday - 08.30 to 17.00

Thursday - 08.30 to 17.00

Friday - 08.30 to 13.00

Kingseat Dental Care offers a full range of preventive and routine dental care for adults and children under the NHS. Private dental care and cosmetic dentistry is available on request.

Our concern is with the oral health of our patients therefore we aim to provide excellent customer service, clinical excellence and high quality patient care.

**Simply call us on 01651 260200 to register
for your FREE NHS Check up**

Routine Dental Treatment:

Check up and Xrays, Preventative Care, Inlays and Crowns
Root Canal Treatment, Bridge Work and Dentures

Cosmetic Dental Treatment:

Tooth Whitening (In Chair and Home Kits), CEREC Crown,
Facial Aesthetics

For fast professional service contact Aberroof:

t **01224 705518**

m **07528 568802**

e aberroof@yahoo.co.uk

www.AberRoof.co.uk



Slating • Flat Roofing

PVCU Cladding • Rough Casting

Specialists in all aspects of roofing maintenance

Many years experience & quality workmanship

Full Liability Insurance & all new work guaranteed

LOCAL LOKS

**Rapid Response
Emergency Locksmith**

**Call Peter:
0770 3472 390**

ANDERSON JOINERY & FLOORING

Potterton, Aberdeenshire

Supply and/or fit Amtico, Karndean, Laminate,
Solid Wood, Carpet, Vinyl etc
and General Property Maintenance
for a free quote or further information,
call Marc Anderson on **07716829484**
or email:

Andersonjoineryandflooring@gmail.com



Look out for:

Mair's Fish Van

Potterton: Tues. 3.15 - 4.15

Panmure Gdns, Denhead Cres,

Church Rd & Denview. Also

Parkhill Garden Centre 2-2.30pm

Tel: **07716899548**

mairfish@gmail.com

Martin Stallard

Grass Mowing

Garden Maintenance

Tel: **01358 742833**

07778 344855

INDEX OF ADVERTISERS

GARAGES & TRANSPORT	Pg	RETAIL	Pg
Cadger's Garage, Belhelvie	8	Aberdeenshire Larder	39
Cadger's Taxis	38	Balmedie Fish & Chip Shop	28
GRM Garage	32	Bridgefoot Organics	8
Jock's Taxi	16	Mair Fish	47
Lawrence of Kemnay	36	Pauline Wood - Antiques	32
Potterton Service Station	26	Potterton Shop	14
Victoria Garage	18	The Store	24
GARDEN SERVICES		SERVICES	
A&C Gardening	16	Aberdeenshire Laptop Repairs	42
Newmachar Tree Surgery	23	Flowerpots Nursery	26
Parkhill Garden Centre	*IFC	Leigh Smith Soft Furnishing	2
Stallard Garden Services	47	Lokal Loks	47
HEALTH & BEAUTY		Marks Valet	30
Balmedie Hair & Beauty	32	MSD Design Ltd	25
Dickies Pharmacy	14	McKenzie Print	39
D. Leal Chiropodist	4	Pets Crematorium	4
Eliz Ross Physiotherapist	2	Robert Lamb Architect	40
1st Class Foot Care	6	RJG Property Maintenance	42
Hairshack	12	Wester Hatton Landfill	9
Kingseat Dental	46	TRADES	
Nail & Beauty Academy	43	Aberroof	47
Peace Lily	30	Anderson Joinery	47
LEISURE		Balmedie Plumbing & Heating	20
Cock & Bull	*IBC	Bob Deans Painter & Decorator	24
Inverurie Panto	16	Carle's Sheds	40
Jazzercise	8	Gough Decorators	26
Murcar Golf Links	12	Ian's Roofing	40
White Horse Inn	23	Jesmond Joinery Services	10
PETS & THEIR NEEDS		John Duncan Plant Hire	10
A 1 Aquatics	6	K F Watson	43
Animal Nanny	43	Michael Duncan, Builder	34
Ardene House Vet	28	Prompt Plumbing	38
Daftneys Doggies	16	Reid Plumbing & Heating	44
Frogmore Cattery	*IBC	Wayne Coombes Roofing	4
Lady & Tramp Pet Grooming	2		
Positive Paws	38		

*IFC Inside Front Cover

*IBC Inside Back Cover

***Copy date for Winter Edition: Friday 31st October 2014

e mail: belhelviebanter@live.co.uk

INDEX OF ADVERTISERS

***IFC Inside Front Cover**

***IBC Inside Back Cover**

*****Copy date for Winter Edition: Friday 31st October 2014**

e mail: bellhelviebanter@live.co.uk



Bring along this advert when you dine with us for lunch or dinner from Monday to Friday to receive a 20% discount on your final bill

A photograph of the Cock & Bull restaurant building, a two-story stone structure with a grey roof and white window frames. A stone wall and green lawn are in the foreground. A signpost with a red and black logo is visible on the left.

To Book: Tel 01358 743249
Email info@thecockandbull.co.uk
Visit www.thecockandbull.co.uk

A logo featuring a stylized black rooster and bull silhouette on a red background.

COCK & BULL
RESTAURANT • BAR • CONSERVATORY

August	Dates for your Diary		
Tues 26	Friendship Group Bingo	Eigie House	2pm
September			
Thurs 4	Bookends	White Horse Inn	8pm
Sun 7	Guild Dedication Service	Belhelvie Church	11am
Tues 9	Friendship Group Entertainment	Eigie House	2pm
Wed 10	SWRI	Eigie House	7.30pm
Sun 14	Communion	Belhelvie Parish Church	11am
Thurs 18	School In-service Day	BoDA	
Fri 19-Mon 22	September Holiday	Balmedie BoDA	
Tues 23	Friendship Group Entertainment	Eigie House	2pm
Wed 24	SWRI Whist	Eigie House	7.30pm
Thurs 25	Better Balmedie Bailies of Bennachie Talk	Library	7.30pm
October			
Sat 4	'Wrestle Zone'	Balmedie Leisure Centre	7.00pm
Sun 5	Harvest Thanksgiving Service	Belhelvie Church	11am
Tues 7	Friendship Group Entertainment	Eigie House	2pm
Wed 8	SWRI	Eigie House	7.30pm
Thurs 9	Belhelvie Church Social Fashion Show	Forsyth Hall	7.30pm
Fri 10	School term ends	Balmedie, BoDA, Ellon	
Tues 21	Friendship Group Talk	Eigie House	2pm
Wed 22	SWRI Whist	Eigie House	
Mon 27	School term Starts	Balmedie, BoDA, Ellon	
November			
Sun 2	Communion	Belhelvie Parish Church	11am
Tues 4	Friendship Group Cruden Singers	Eigie House	2pm
Sat 8	Bus to Ikea and McArther Glen	Balmedie Leisure Centre	
Sun 9	Remembrance Sunday	Belhelvie Church	10.50am
Wed 12	SWRI	Eigie House	7.30pm
Mon 17	School In-service Day	Balmedie, BoDA, Ellon	
Tues 18	School In-service Day	Ellon	
Tues 18	Friendship Group Talk & Slideshow	Eigie House	2pm
Thurs 20	Evening with Clairvoyant	Balmedie Leisure Centre	
Sat 22	Christmas Coffee Morning	Forsyth Hall	10-noon
Wed 26	SWRI Whist	Eigie House	7.30pm
Sun30	Christingle Service	Belhelvie Church	6.30pm
December			
Tues 2	Friendship Group Rotary Glee Club	Eigie House	2pm
Sun 7	Bon Accord Silver Band	Belhelvie Church	11am
Wed 10	SWRI	Eigie House	7.30pm
Tues 16	Friendship Group Christmas Party	Eigie House	2pm